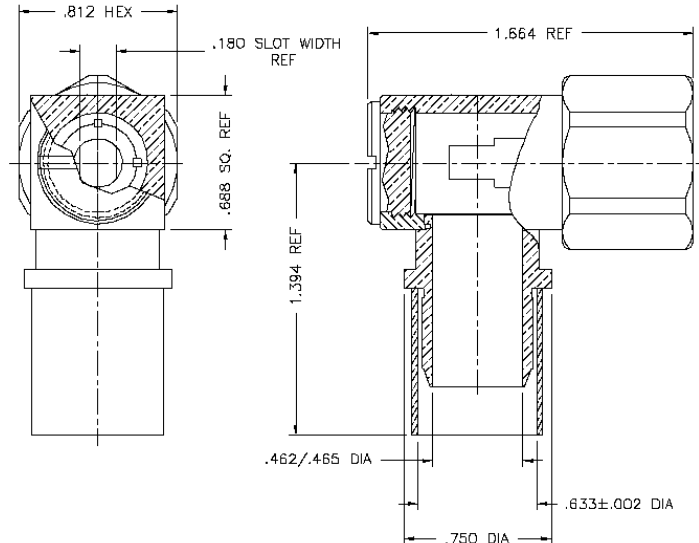


THE REVISION STATUS OF ALL SHEETS OF THIS DRAWING IS THE SAME AS SHEET 1

LTR	DESCRIPTION	DATE	BY
-	Released	6/3/99	JCL
A	Redrawn	9/12/06	JCL



I. MATERIALS & FINISHES

center contact: Gold Plated Brass
 outer contact: Silver Plated Brass
 body: Silver Plated Brass
 coupling nut: Silver Plated Brass
 crimp sleeve: Silver Plated Copper
 dielectric: Teflon® PTFE
 gasket: Silicone Rubber
 shrink sleeve: Adhesive Lined Polyolefin
 attachment: braid crimp (.610" hex)

II. ELECTRICAL PROPERTIES

impedance: 50 ohms
 working voltage: 1000 vrms (max)
 vswr: 1.25:1 (max) up to 2.5 GHz
 insertion loss: 0.15 x √Fghz

Unless otherwise specified, dimensions are in inches. Tolerances are applicable when specified.

These drawings and specifications contain proprietary information which is the property of Times Microwave Systems.

Approvals

Drawn	JCL	6/3/99



TIMES MICROWAVE SYSTEMS

Wallingford, CT 06492
 (203) 949-8400; (203) 949-8423.Fax
 www.timesmicrowave.com

TC-600-NMH-RA

N Male (Plug) Right Angle
 for LMR-600 Cable

Size A	CAGE CODE 68999	Drawing No.: 3190-785
--------	-----------------	-----------------------

Scale: NA

Rev. (A)

Sheet: 1 of 1