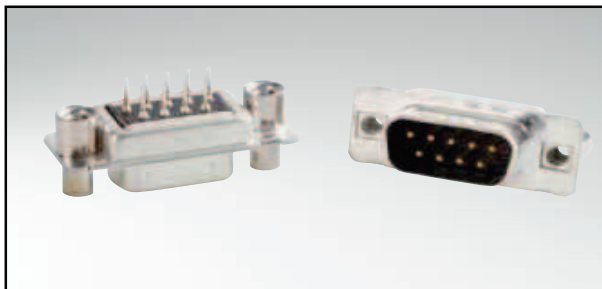


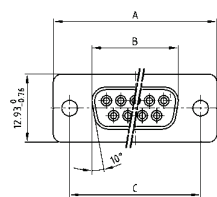
# C-FILTER D-SUB STANDARD

Solder pin – Straight – Precision machined contacts



RoHS compliant – CSA listed, File No.: LR 115000-1 – UL listed, File No.: E202784

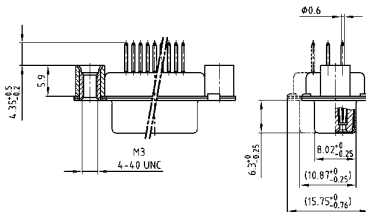
## SOCKET CONNECTOR



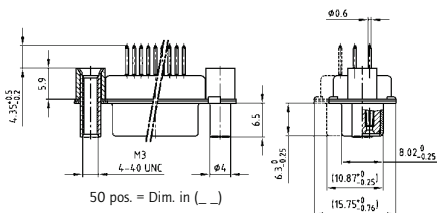
No. of pos.	A -0.76	B -0.25	C
09	31.19	16.46	25.00 <sup>+0.12</sup> / <sub>-0.13</sub>
15	39.52	24.79	33.30 <sup>+0.15</sup> / <sub>-0.10</sub>
25	53.42	38.50	47.04 <sup>+0.13</sup> / <sub>-0.10</sub>
37	69.70	54.96	63.50 <sup>+0.13</sup> / <sub>-0.10</sub>
50	67.31	52.55	61.10 <sup>+0.14</sup> / <sub>-0.11</sub>

PCB layout: Kat1kFUA

Mounting style: Threaded rear spacer



Mounting style: Threaded rear spacer, front spacer

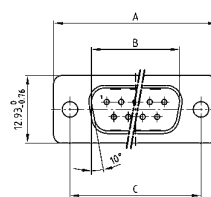


50 pos. = Dim. in ( \_ )

## DESCRIPTION

- Mounting styles:
  - with 4-40 UNC or M3 threaded rear spacer
  - with 4-40 UNC or M3 front and threaded rear spacer
- Quality class 3 (also available in quality class 1)
- Shell: Steel tin plated (brass tin plated on request)

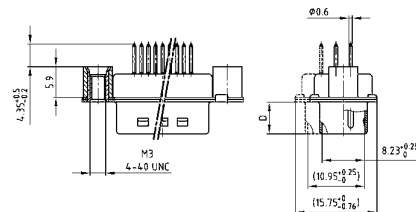
## PLUG CONNECTOR



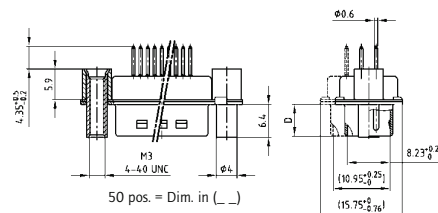
No. of pos.	A -0.76	B -0.25	C	D -0.3
09	31.19	16.79	25.00 <sup>+0.12</sup> / <sub>-0.13</sub>	6.12
15	39.52	25.12	33.30 <sup>+0.15</sup> / <sub>-0.10</sub>	6.12
25	53.42	38.84	47.04 <sup>+0.13</sup> / <sub>-0.10</sub>	5.99
37	69.70	55.30	63.50 <sup>+0.13</sup> / <sub>-0.10</sub>	5.99
50	67.31	52.68	61.10 <sup>+0.14</sup> / <sub>-0.11</sub>	5.99

PCB layout: Kat1kFUA

Mounting style: Threaded rear spacer



Mounting style: Threaded rear spacer, front spacer



50 pos. = Dim. in ( \_ )

## ORDER DATA

### Capacitance 180 pF

#### SOCKET CONNECTOR

No. of pos.	Mounting style	Part Number
09	4-40 UNC Threaded rear spacer	242 A 16210 X
15	4-40 UNC Threaded rear spacer	242 A 16220 X
25	4-40 UNC Threaded rear spacer	242 A 16230 X
37	4-40 UNC Threaded rear spacer	242 A 16240 X
50	4-40 UNC Threaded rear spacer	242 A 16250 X
09	M3 Threaded rear spacer	242 A 16260 X
15	M3 Threaded rear spacer	242 A 16270 X
25	M3 Threaded rear spacer	242 A 16280 X
37	M3 Threaded rear spacer	242 A 16290 X
50	M3 Threaded rear spacer	242 A 16300 X
09	4-40 UNC Front / Threaded rear spacer	242 A 16310 X
15	4-40 UNC Front / Threaded rear spacer	242 A 16320 X
25	4-40 UNC Front / Threaded rear spacer	242 A 16330 X
37	4-40 UNC Front / Threaded rear spacer	242 A 16340 X
50	4-40 UNC Front / Threaded rear spacer	242 A 16350 X
09	M3 Front / Threaded rear spacer	242 A 16360 X
15	M3 Front / Threaded rear spacer	242 A 16370 X
25	M3 Front / Threaded rear spacer	242 A 16380 X
37	M3 Front / Threaded rear spacer	242 A 16390 X
50	M3 Front / Threaded rear spacer	242 A 16400 X

#### PLUG CONNECTOR

No. of pos.	Mounting style	Part Number
09	4-40 UNC Threaded rear spacer	241 A 18830 X
15	4-40 UNC Threaded rear spacer	241 A 18840 X
25	4-40 UNC Threaded rear spacer	241 A 18850 X
37	4-40 UNC Threaded rear spacer	241 A 18860 X
50	4-40 UNC Threaded rear spacer	241 A 18870 X
09	M3 Threaded rear spacer	241 A 18880 X
15	M3 Threaded rear spacer	241 A 18890 X
25	M3 Threaded rear spacer	241 A 18900 X
37	M3 Threaded rear spacer	241 A 18910 X
50	M3 Threaded rear spacer	241 A 18920 X
09	4-40 UNC Front / Threaded rear spacer	241 A 18930 X
15	4-40 UNC Front / Threaded rear spacer	241 A 18940 X
25	4-40 UNC Front / Threaded rear spacer	241 A 18950 X
37	4-40 UNC Front / Threaded rear spacer	241 A 18960 X
50	4-40 UNC Front / Threaded rear spacer	241 A 18970 X
09	M3 Front / Threaded rear spacer	241 A 18980 X
15	M3 Front / Threaded rear spacer	241 A 18990 X
25	M3 Front / Threaded rear spacer	241 A 19000 X
37	M3 Front / Threaded rear spacer	241 A 19010 X
50	M3 Front / Threaded rear spacer	241 A 19020 X

