

D-SUB PLASTIC HOOD

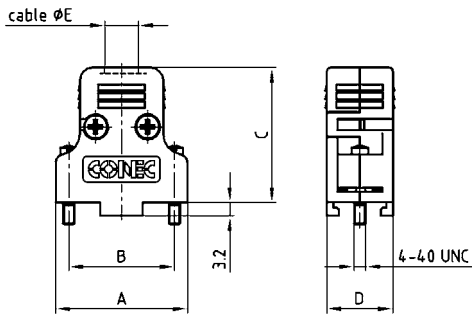
Single or dual cable entry – 9-50 pos.



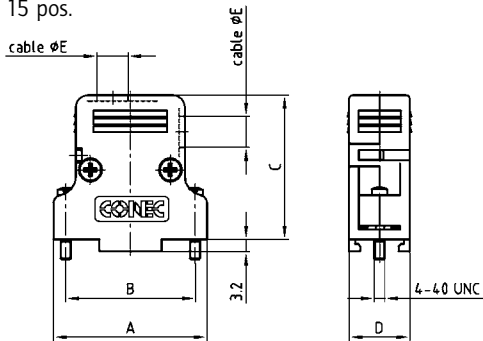
RoHS compliant – CSA listed, File No.: LR 115000-1 – UL listed, File No.: E202784

PRODUCT DRAWING

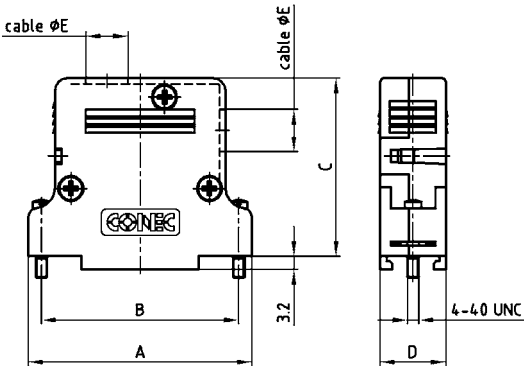
9 pos.



15 pos.



25-50 pos.



No. of pos.	A	B	C	D	Ø E
09	31.20	25.00	31.80	15.60	8.00
15	39.50	33.30	37.00	15.60	8.00
25	53.20	47.00	42.20	15.60	10.00
37	69.70	63.50	42.20	15.60	10.00
50	67.30	61.10	42.20	18.50	12.50

ORDER DATA

D-SUB PLASTIC HOOD GREY			D-SUB PLASTIC HOOD METALLIZED		
No. of pos.	Design	Part Number	No. of pos.	Design	Part Number
09	Grey housing / Single cable entry / 4-40 UNC Short screw	165 X 11869 X	09	Metallized housing / Single cable entry / 4-40 UNC Short screw	165X11919 X
15	Grey housing / Dual cable entries / 4-40 UNC Short screw	165 X 11879 X	15	Metallized housing / Dual cable entries / 4-40 UNC Short screw	165X11929 X
25	Grey housing / Dual cable entries / 4-40 UNC Short screw	165 X 11889 X	25	Metallized housing / Dual cable entries / 4-40 UNC Short screw	165X11939 X
37	Grey housing / Dual cable entries / 4-40 UNC Short screw	165 X 11899 X	37	Metallized housing / Dual cable entries / 4-40 UNC Short screw	165X11949 X
50	Grey housing / Dual cable entries / 4-40 UNC Short screw	165 X 11909 X	50	Metallized housing / Dual cable entries / 4-40 UNC Short screw	165X11959 X

For single packaged add the letter „E“ at the end of the part number.