

APPLICATION		REVISIONS				
NEXT ASSY	USED ON	REV	ECO #	DESCRIPTION / PAGE (S)	DATE	APPROVED
5402960-1	ARA-63	—	---	Initial Release	03/09/24	W.C.
		A	D13.0401	Per ECO	13/07/10	W.C.
		B	D15.0039	Per ECO	15/02/11	J.T.

Limited Rights Legend

CONTRACT NO. N00383-01-D-025H

Explanation of Limited Rights Data Indication Used: Entire Document

Those portions of this technical data indicated as limited rights data shall not Without the written permission of the above contractor, be either (a) used, released or disclosed in whole or in part outside the Government, (b) used in whole or part by the Government for manufacture or (c) used by a party other than the Government, except for : (i) emergency repair or overhaul work only, by or for the Government, where the item or process concerned is not otherwise reasonably available to enable timely performance of the work, provided that the release or disclosure hereof outside the government shall be made subject to a prohibition against further use, release, or disclosure; or (ii) release at a foreign government, as the interest of the United States may require, only the information or evaluation within such government or for emergency repair or overhaul work by or for such government under the condition of (i) above. This legend, together with the indications of the portions of this data which are subject to such limitations, shall be included on any reproduction hereof which includes any part of the portions subject to such limitations.

THESE DRAWINGS AND SPECIFICATIONS ARE THE PROPERTY OF HERLEY INDUSTRIES, INC. AND SHALL NOT BE REPRODUCED, COPIED, OR USED AS THE BASIS FOR THE MANUFACTURE OR SALE OF APPARATUS WITHOUT PERMISSION

UNLESS OTHERWISE SPECIFIED DIMENSIONS ARE IN INCHES TOLERANCES: ANGLES $\pm 1^{\circ}$.XX DECIMALS $\pm .01$.XXX DECIMALS $\pm .005$ PART SHALL BE FREE OF BURRS BROKEN EDGES .010 MAX FILLETS R .010 MAX SURFACE ROUGHNESS $64\sqrt{}$ INTERPRET DRAWINGS IN ACCORDANCE WITH STANDARDS PRESCRIBED IN DOD-STD-100		NAME	DATE	HERLEY INDUSTRIES, INC. 3061 Industry Drive Lancaster, PA 17603 SPECIFICATION CONTROL DRAWING CONNECTOR, RECEPTACLE		
	QA	G.KOPP	9/24/03			
	PROD	D.BRADFIELD	9/24/03			
	MECH ENG	J.TROUTMAN	9/24/03			
	CM	W.CARL	9/24/03			
	ELEC ENG	C.REISEL	9/24/03			
	CHECKED					
	DRAWN	M. Goliter	8/6/03			
DO NOT SCALE THIS DRAWING						
			SIZE A	CAGE CODE 24469	DWG NO. 5600924	REV B
			SCALE: NONE	COMPUTER GENERATED	PAGE 1 OF 7	

1.0 SCOPE AND PURPOSE

1.1 GENERAL

This document controls the specifications for the receptacle connectors purchased by Herley Industries Inc. (HI)

1.2 PART NUMBER

The Herley Industries Inc. Part Number for parts supplied to this drawing shall be structured as follows:

<u>Specification No.</u>		<u>Coded Dash No.</u>
5600924-	-	2
5600924-	-	3

2.0 APPLICABLE DOCUMENTS

The applicable documents are the published Manufacturer's Data Sheets for the receptacle connectors addressed herein.

3.0 REQUIREMENTS

The receptacle connectors shall meet the requirements that follow:

3.1 WORKMANSHIP

The receptacle connectors shall be processed in accordance with the manufacturer's standard practices and shall be free of foreign material, cracks, voids, or other defects that would affect life or performance.

3.2 MARKING

The receptacle connectors shall be bagged and tagged or labeled, with the following:

	5600924-2	5600924-3
Manufacturer's part number	MM34-22SGDS25	MM14-22SGDS25
Manufacturer's name, symbol, or code	Continental Connector Company	Continental Connector Company

3.3 ELECTRICAL SPECIFICATIONS

3.4 ENVIRONMENTAL SPECIFICATION(S)

Herley Industries, Inc. 3061 Industry Drive Lancaster, PA 17603	SIZE A	CAGE CODE 24469	DWG NO. 5600924	REV B
	SCALE: NONE	COMPUTER GENERATED	PAGE 2	

3.5 DIMENSIONAL SPECIFICATIONS

The dimensional specifications for 5600924-2 and 5600924-3 shall be per Figure 1 and Figure 2 respectively.

4.0 QUALITY ASSURANCE PROVISIONS

- a) Unless otherwise specified in the contract or purchase order, the supplier shall be responsible for all inspection requirements as specified herein.
- b) Inspection and test procedures shall be in accordance with the manufacturer's standard documented product assurance program.
- c) Certification that the materials, finishes, design, construction, physical dimensions, marking and workmanship are in accordance with the specified requirements shall accompany each shipment.
- d) HI Incoming Inspection shall verify:
 - 3.1, 3.2, 3.5 and 4c) by inspection.
 - 3.3 and 3.4 by ensuring that the manufacturer's documentation encompasses all parameters specified herein.

5.0 PRESERVATION, PACKAGING AND PACKING

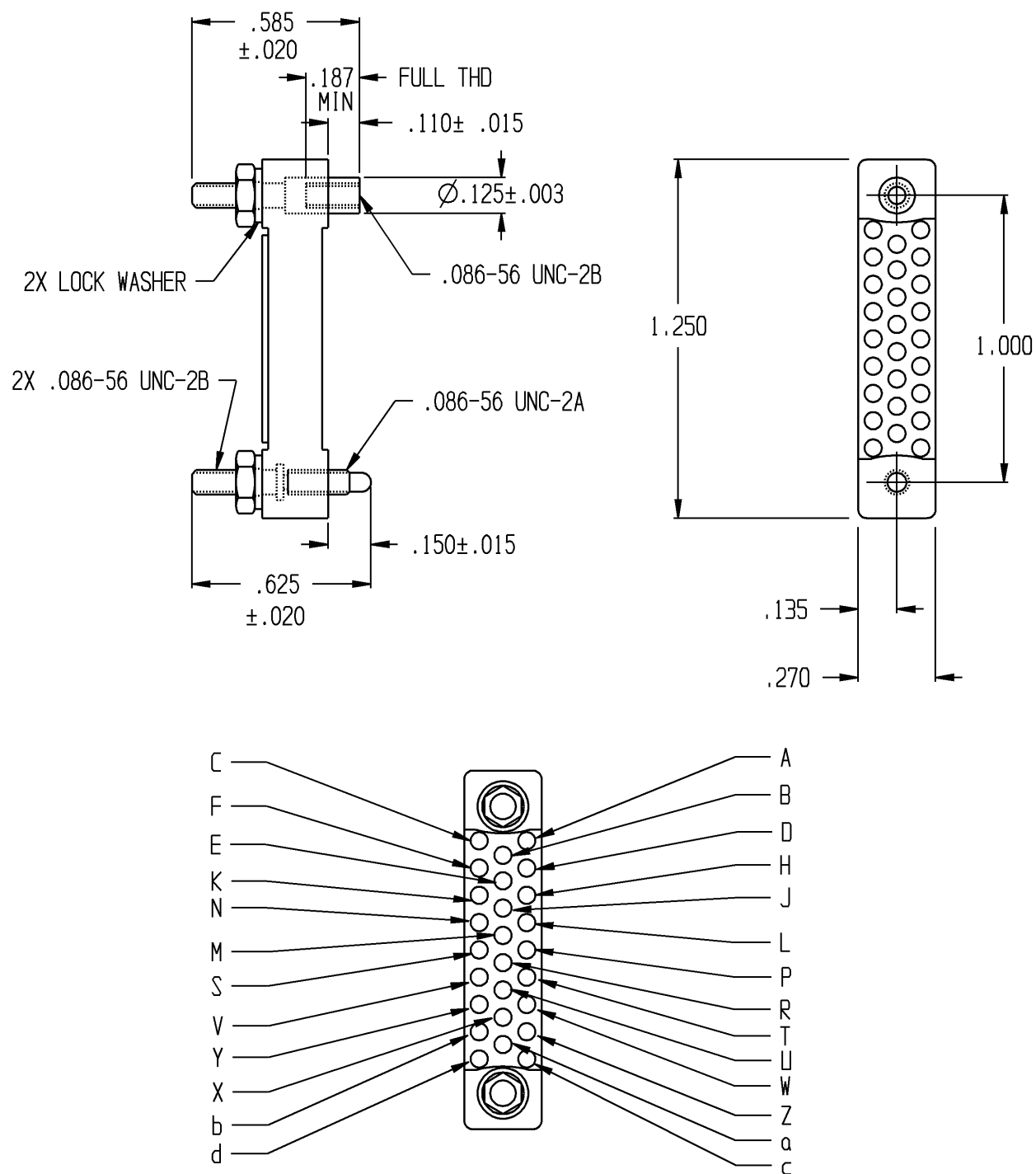
Handling and shipping by common carrier shall impose no damage or degradation to the device(s) specified herein. Marking on shipping containers shall be best commercial practice. Marking on shipping containers shall include, as a minimum, the following:

- HI part number: 5600924-2, 5600924-3
- HI Purchase order number
- Supplier's name and symbol, or code.

Each device in a shipping container shall be bagged and tagged or labeled as follows:

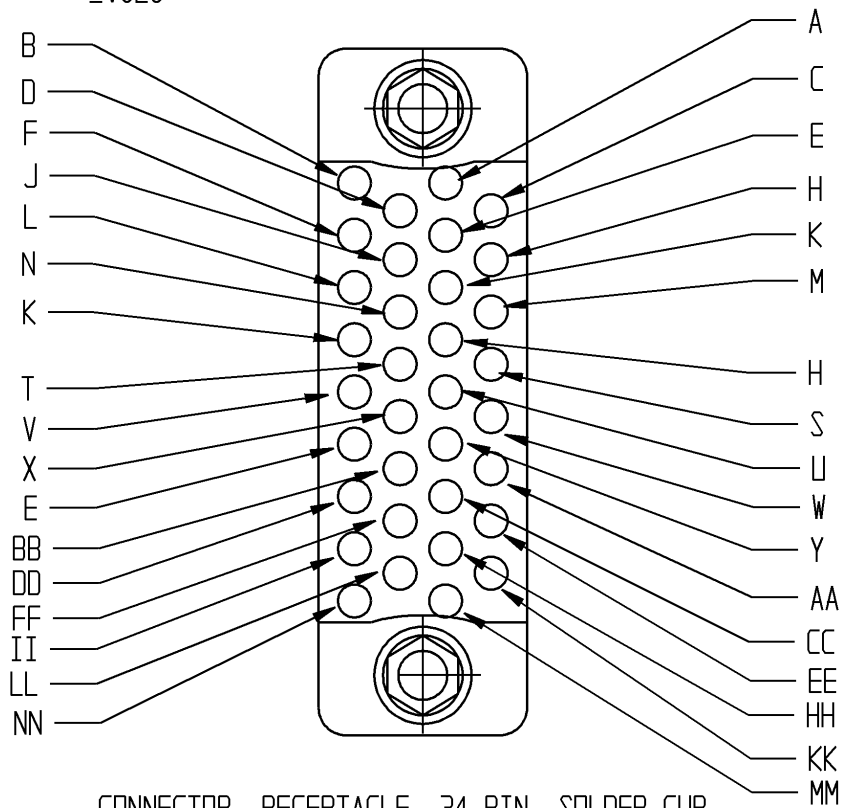
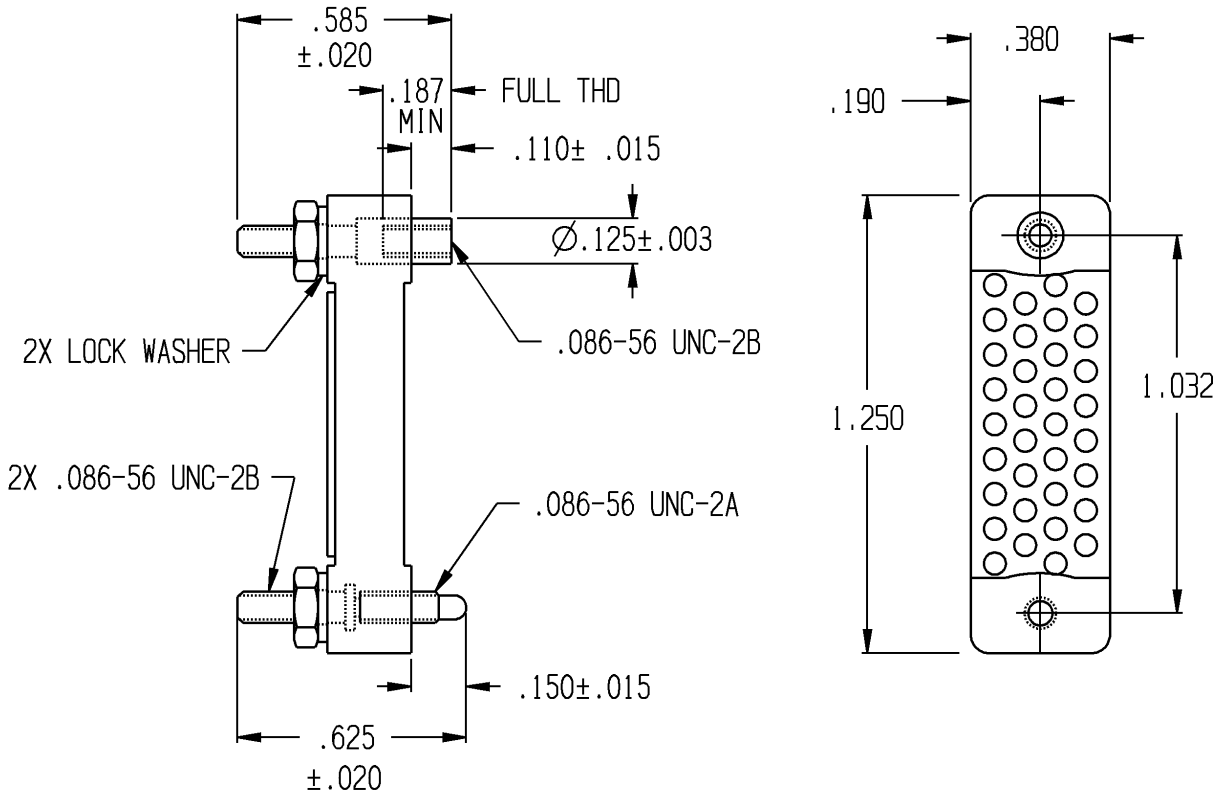
- Supplier's Model and/or Part Number
- Serial Number (if applicable)

Herley Industries, Inc. 3061 Industry Drive Lancaster, PA 17603	SIZE A	CAGE CODE 24469	DWG NO. 5600924	REV B
	SCALE: NONE	COMPUTER GENERATED	PAGE 3	



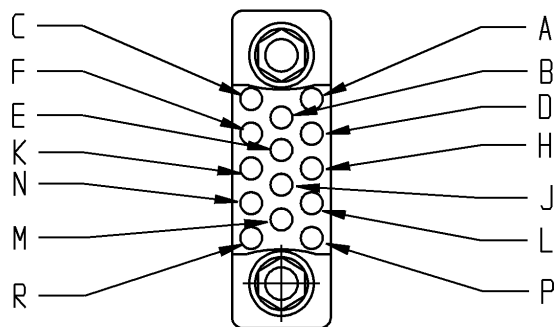
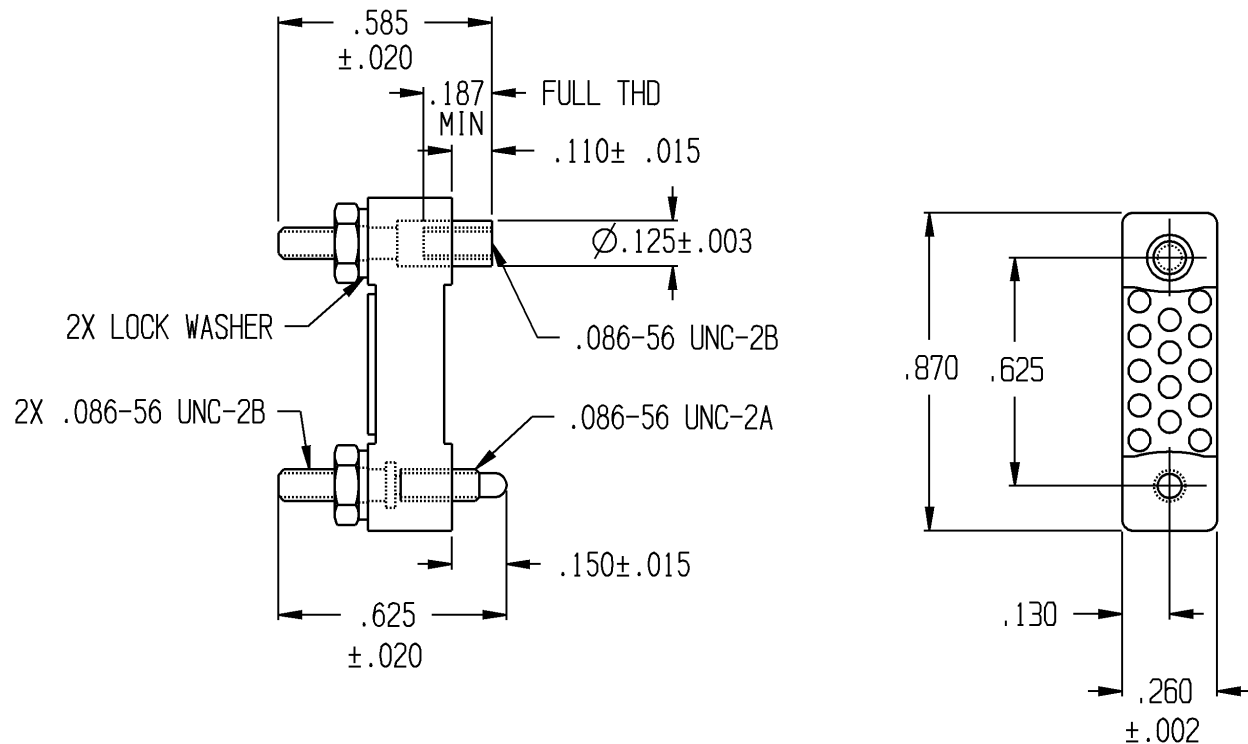
CONNECTOR, RECEPTACLE, 26 PIN, SOLDER CLIP

Figure 1: Outline Drawing of 5600924-1



CONNECTOR, RECEPTACLE, 34 PIN, SOLDER CLIP

Figure 2: Outline Drawing of 5600924-2



CONNECTOR, RECEPTACLE, 14 PIN, SOLDER CUP

Figure 3: Outline Drawing of 5600924-3

6.0 SUGGESTED SOURCES OF SUPPLY

"Identification of the suggested source(s) of supply herein is not to be construed as a guarantee of present or continued availability as a source of supply for the item(s)". A list of suggested source(s) of supply follows:

Supplier's P/N: – MM34-22SGDS25 HI P/N: 5600924-2 CAGE code: 24469	Continental Connector Company 53 La France Avenue Bloomfield, NJ 07003 Phone: (973) 429-8500 Fax: (973) 743-2510 www.continentalconnector.com
Supplier's P/N: – MM14-22SGDS25 HI P/N: 5600924-3 CAGE code: 24469	Continental Connector Company 53 La France Avenue Bloomfield, NJ 07003 Phone: (973) 429-8500 Fax: (973) 743-2510 www.continentalconnector.com