

| APPLICATION | | REVISIONS | | | | |
|--|---------|-----------|---|---------|----------|-----------|
| NEXT ASSY | USED ON | LTR | DESCRIPTION | REL | DATE | APP |
| | | - | INITIAL RELEASE | | | |
| | | A | ECO 17931 Added "-7R" Reversed Polarization | 7289 | 90-01-05 | |
| | | B | ECO M10113 Class II Change Width | 1924 | 93-05-25 | |
| | | C | CHANGES PER ECOC10501A PMA-0718 | 3833 | 11/03/94 | PW |
| | | D | ADD 14 PIN CONNECTOR PER ECO E11726 | 04-1494 | 07/20/04 | SK |
| SEE DOCUMENT MANAGEMENT SYSTEM FOR APPROVAL STATUS | | | | | | |
| | | E | ECO-12267 REV A TRIAD P-4803 | | 12/01/27 | (ON FILE) |

THESE COMMODITIES, TECHNOLOGY, OR SOFTWARE ARE CONTROLLED BY THE U.S. EXPORT ADMINISTRATION REGULATIONS (EAR). DIVERSION CONTRARY TO U.S LAW IS PROHIBITED.

ECCN: EAR99

ESD CLASSIFICATION:
PROPRIETARY CLASS: U
PROGRAMS:
CONTRACT NO.

| | | | | | | | | | | | | | | | | |
|------------|--------|---|---|---|---|---|---|---|--|--|--|--|--|--|--|--|
| REV STATUS | REV | E | E | E | E | E | E | E | | | | | | | | |
| OF SHEETS | SHEETS | 1 | 2 | 3 | 4 | 5 | 6 | 7 | | | | | | | | |

SPECIFICATION CONTROL DRAWING

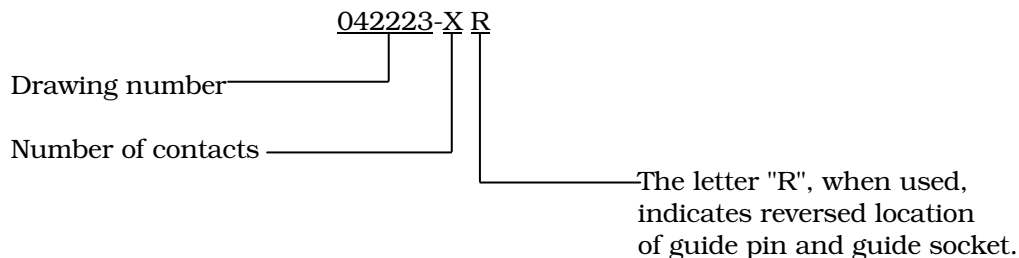
INTERPRET IN ACCORDANCE WITH MIL-STD-100

| | | | | | | |
|--------------------------------|---------------------------|--|--------------------|--------------------------|--------------|--|
| DRAWN S. Walter | DATE (YYMMDD) 89/04/07 | Goodrich Corporation SIMMONDS PRECISION AIRCRAFT SYSTEMS VERGENNES, VERMONT | | | | |
| EE/ME T. Fox/J. Bodette | 89/08/07 | | | | | |
| QUALITY ASSURANCE G. Miller | 89/08/22 | TITLE: CONNECTOR, ELECTRICAL, RECEPTACLE, RECTANGULAR | | | | |
| RELBL ENGR. S. Blumen | 89/05/24 | | | | | |
| | | SIZE A | CAGE CODE 89305 | DWG NO 042223- | | |
| | | SCALE: NONE | | WT | SHEET 1 OF 7 | |

1. SCOPE

1.1 General. This drawing depicts rectangular connectors intended to be used in printed wiring board applications. These connectors have socket contacts with terminations intended to be soldered to printed wiring boards.

1.2 Part number. The Simmonds number shall be assigned as follows:



2. APPLICABLE DOCUMENTS

"This section is not applicable to this specification."

3. REQUIREMENTS

3.1 Outline and dimensions. The outline and dimensions shall be in accordance with the applicable figures.

3.1.1 Contact type. Contacts shall be closed entry socket contacts with straight terminations for printed wiring board mounting. Socket contacts shall mate with .030 + .001 diameter pin contacts.

3.2 Materials and finishes.

3.2.1 Insulator. Insulators shall be made of glass fiber reinforced diallyl phthalate.

3.2.2 Contacts. Socket contacts shall be made of copper alloy with gold plated finish.

3.2.3 Hardware. Mounting and polarization hardware shall be corrosion resistant steel, passivated.

3.3 Electrical and mechanical ratings.

3.3.1 Dielectric withstanding test voltage (contact to contact and contact to hardware). 1300 Vrms at sea level

3.3.2 Current rating. 3 amperes continuous

3.3.3 Insulation resistance. 5000 megohms minimum at 100 Vdc

3.3.4 Jackscrew Torque. 20-24 in-oz.

| | | | | | |
|--|-----------|--------------------|----------------|-------|---------|
| | SIZE A | CAGE CODE 89305 | DWG NO 042223- | REV E | SHEET 2 |
|--|-----------|--------------------|----------------|-------|---------|

3.3.5 Operating temperature range. -55°C to +125°C

3.4 Marking. As a minimum, each connector shall be marked with the following:

- (a) Manufacturer's part number. (If it is not practical to mark the part, the initial container shall be marked with the manufacturer's part number.)
- (b) The manufacturer's identification.
- (c) Sufficient marking to enable determination of contact location.

4. **QUALITY ASSURANCE PROVISIONS**

4.1 Responsibility for inspection. Unless otherwise specified herein, the supplier is responsible for determining conformance to all requirements of this document. Simmonds Precision reserves the right to further inspect or test material to this document upon receipt. Such inspection and test shall not relieve the supplier of determining conformance.

5. **PREPARATION FOR DELIVERY**

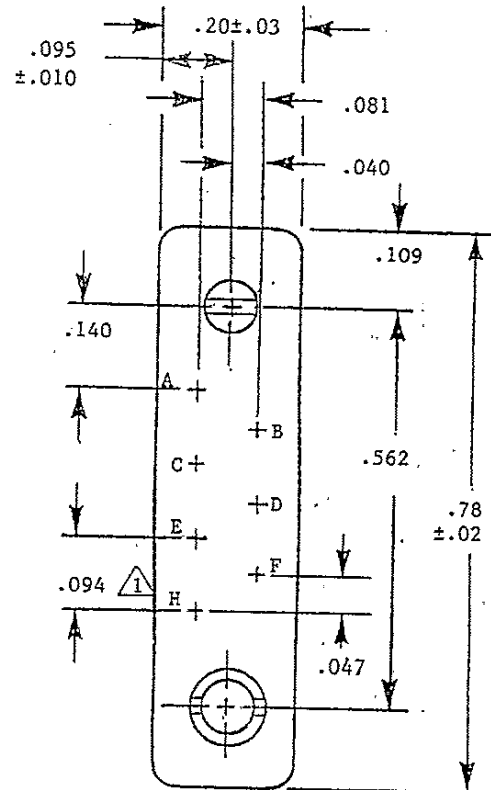
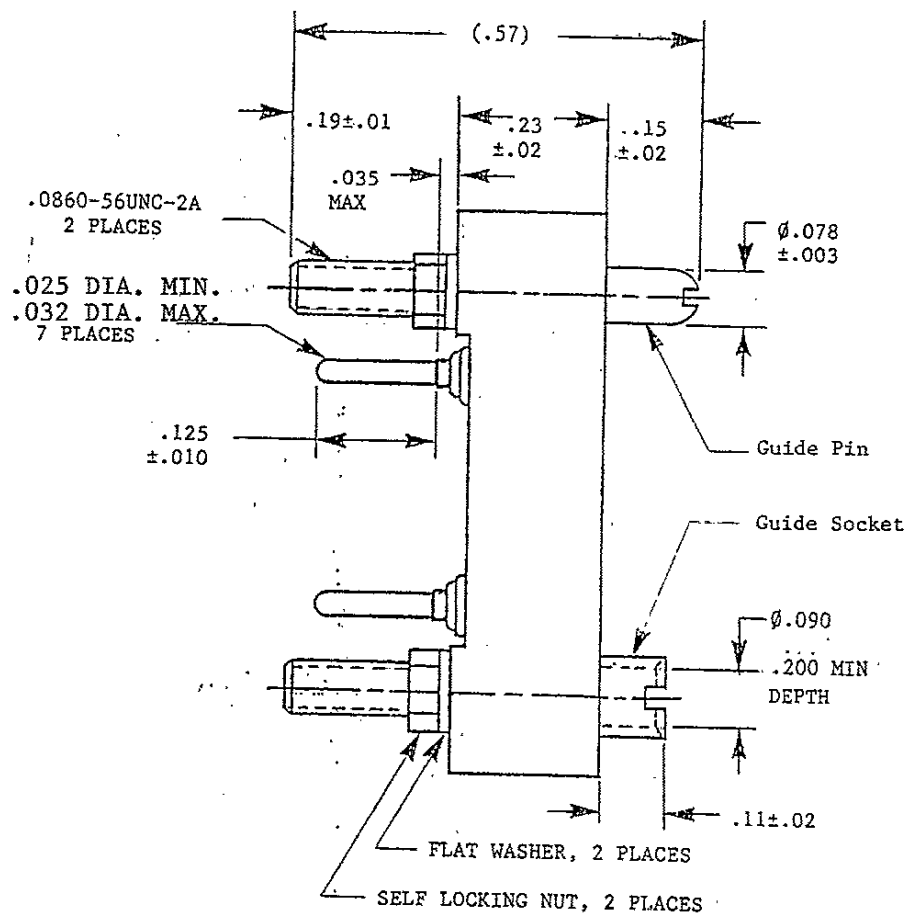
5.1 Packaging. Connectors shall be packaged in a manner that will provide adequate protection during shipment. The initial container shall be marked with the manufacturer's name and part number.

6. **NOTES**

6.1 Connector mating. Connectors depicted by this drawing shall mate with connectors depicted by drawing number 042224- as follows:

042223-7 shall mate with 042224-7
042223-9 shall mate with 042224-9
042223-14 shall mate with 042224-14
042223-7R shall mate with 042224-7R

| | | | | | |
|--|-----------|--------------------|----------------|-------|---------|
| | SIZE A | CAGE CODE 89305 | DWG NO 042223- | REV E | SHEET 3 |
|--|-----------|--------------------|----------------|-------|---------|

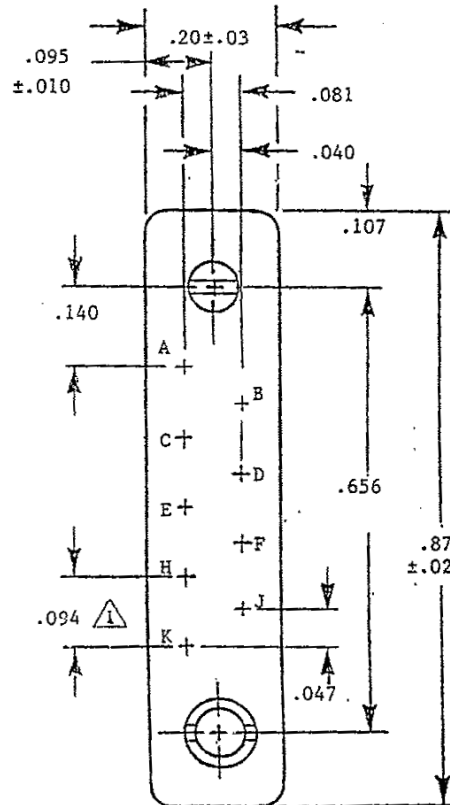


Notes:

1. 5 places, tol non-accumulative.
2. Contact location is identified by letter.
3. Unless otherwise specified, tolerance is ±.005.
4. Location of guide pin and guide socket are reversed for 042223-7R.

FIGURE 1. Outline and dimensions for Simmonds no. 042223-7

| | | | | | |
|--|-----------|--------------------|----------------|-------|---------|
| | SIZE A | CAGE CODE 89305 | DWG NO 042223- | REV E | SHEET 4 |
|--|-----------|--------------------|----------------|-------|---------|



1. 7 places, tol non-accumulative
2. Contact location is identified by letter.
3. Unless otherwise specified, tolerance is $\pm .005$.

| | | | | | |
|--|-----------|--------------------|-----------------------|-------|---------|
| | SIZE A | CAGE CODE 89305 | DWG NO 042223- | REV E | SHEET 5 |
|--|-----------|--------------------|-----------------------|-------|---------|

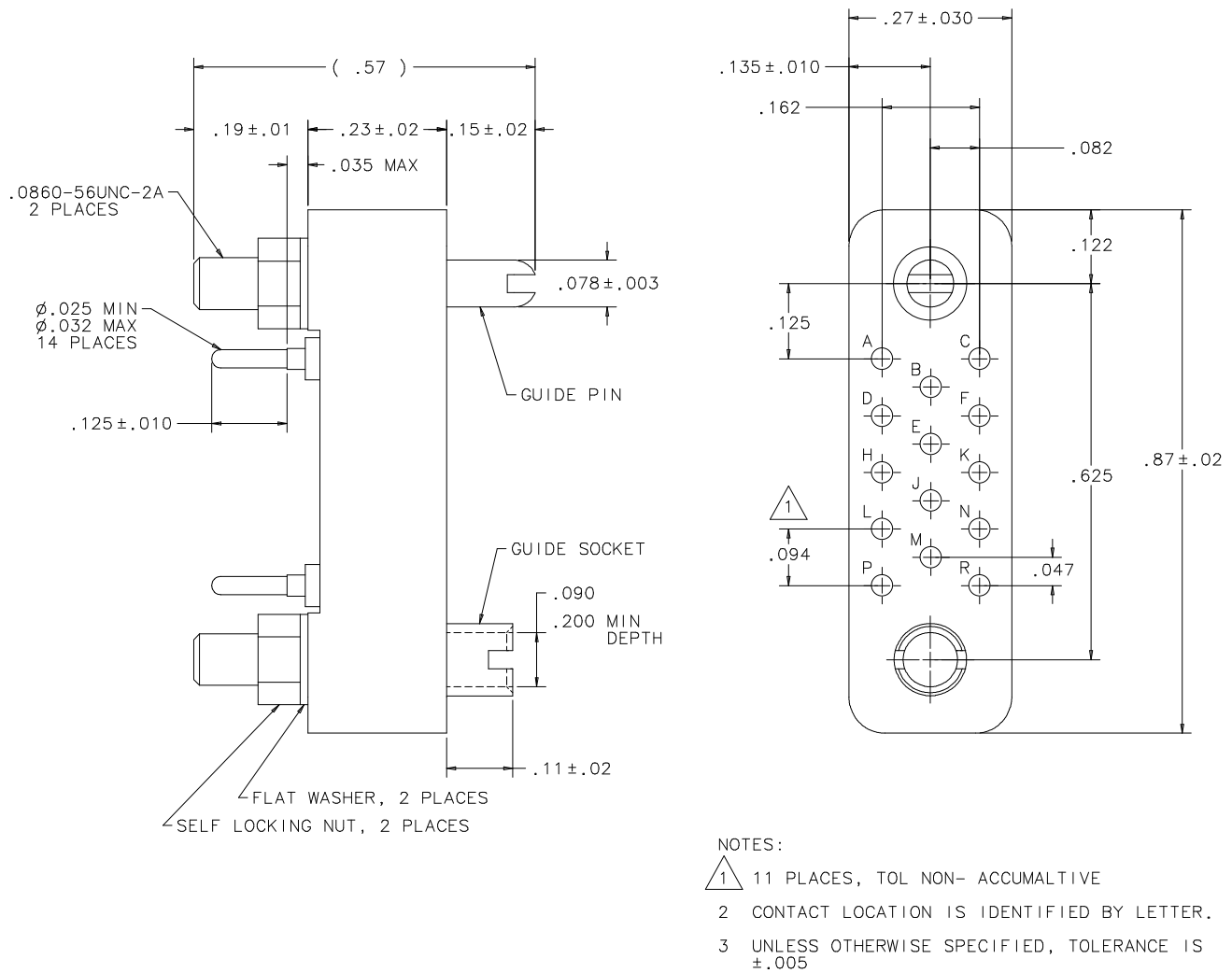


FIGURE 3. Outline and dimensions for Simmonds no. 042223-14

| | | | | | |
|--|-----------|--------------------|----------------|-------|---------|
| | SIZE A | CAGE CODE 89305 | DWG NO 042223- | REV E | SHEET 6 |
|--|-----------|--------------------|----------------|-------|---------|

IDENTIFICATION OF THE SUGGESTED SOURCE(S) OF SUPPLY HEREON IS NOT TO BE CONSTRUED AS A GUARANTEE OF PRESENT OR CONTINUED AVAILABILITY AS A SOURCE OF SUPPLY FOR THE ITEM DESCRIBED ON THE DRAWING.

SUGGESTED SOURCES OF SUPPLY

| MANUFACTURER | MANUFACTURER'S PRODUCT NAME/NO. | SIMMONDS NO. |
|---|------------------------------------|--------------|
| Continential Connector Corp. Woodside, NY 11377 CAGE Code: 95238 Dale Electronics Yankton, SD | CMM7-22SDD13SS19-85-50 | 042223-7 |
| | CMM7-22SDD13SS19-85-R-50 | 042223-7R |
| | CMM9-22SDD13SS19-85-50 | 042223-9 |
| | CMM14-22SDD13SS19-85-50 | 042223-14 |
| | CMMD1S22G5-7027L-M101 | 042223-7 |
| | CMMD1S22G5-7R027L-M101 | 042223-7R |
| | CMMD1S22G5-9027L-M101 | 042223-9 |
| | | |

| | | | | | |
|--|-----------|--------------------|----------------|-------|---------|
| | SIZE A | CAGE CODE 89305 | DWG NO 042223- | REV E | SHEET 7 |
|--|-----------|--------------------|----------------|-------|---------|