

INCH-POUND

MIL-DTL-28748/4F

9 September 2004

SUPERSEDING

MIL-DTL-28748/4E

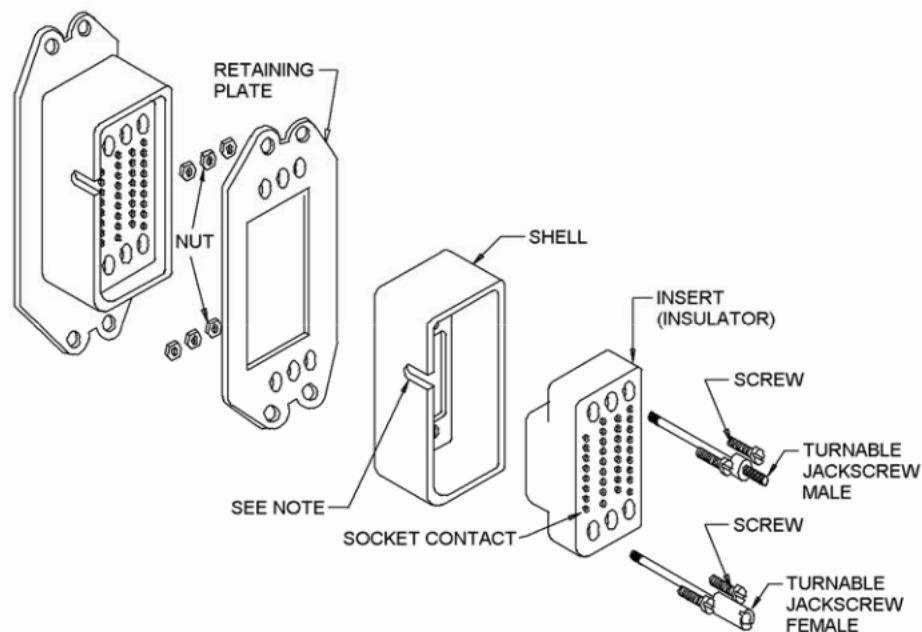
11 May 1999

DETAIL SPECIFICATION SHEET

CONNECTOR, ELECTRICAL, RECTANGULAR, RACK AND PANEL, CRIMP TYPE REMOVABLE SOCKET CONTACTS, SIZES 16 AND 20

This specification is approved for use by all Departments and Agencies of the Department of Defense.

The requirements for acquiring the product described herein shall consist of this specification sheet and MIL-DTL-28748.

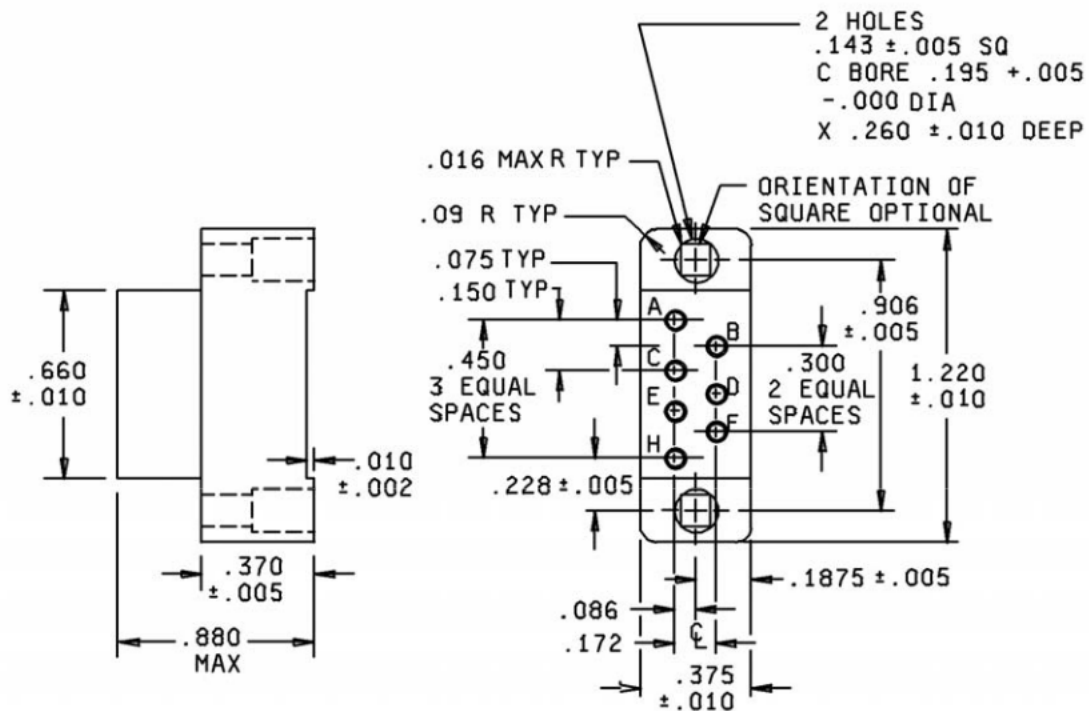


Connector

NOTE: The polarization feature (groove on the receptacle shell, pin on the plug shell) shall be adjacent to the side closest to the number 1 or A contact position.

Configuration A

FIGURE 1. Receptacle connector with retaining plate, receptacle shell, and turnable jackscrews.



Inches	mm	Inches	mm	Inches	mm
.002	0.05	.143	3.63	.300	7.62
.005	0.13	.150	3.81	.370	9.40
.010	0.25	.172	4.37	.375	9.53
.016	0.41	.1875	4.76	.450	11.43
.075	1.91	.195	4.95	.660	16.76
.086	2.18	.228	5.79	.880	22.35
.09	2.29	.260	6.60	.906	23.01
				1.220	30.99

The maximum insertion and withdrawal force (connector assembly) shall be 8.75 lbf (38.92 N) pounds.

Insert with 7 contacts

Insert designator A

FIGURE 2. Insert arrangements.

