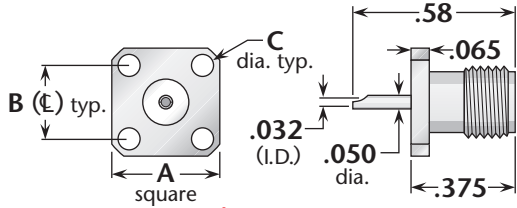
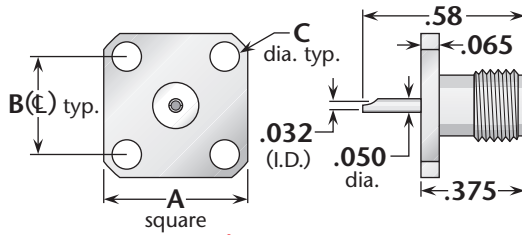


**Panel Jack Receptacle—Solder Pot Contact**

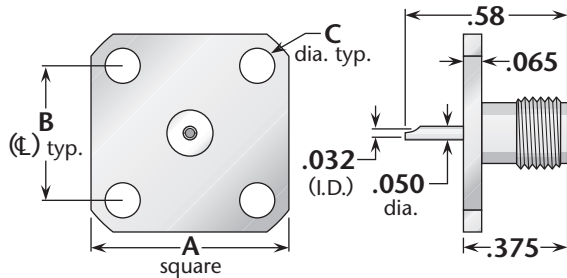


**Figure 1**  
(3/8" square flange)

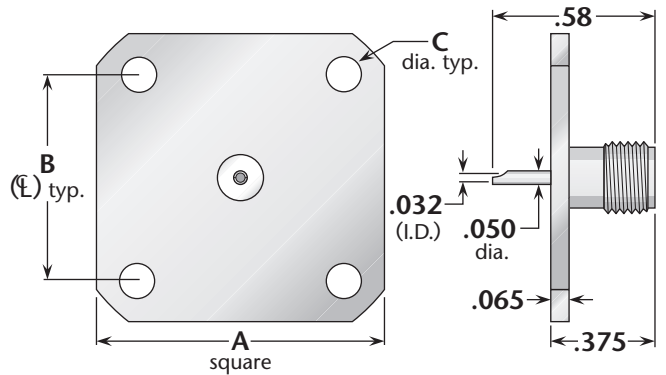


**Figure 2**  
(1/2" square flange, SMA standard flange size)

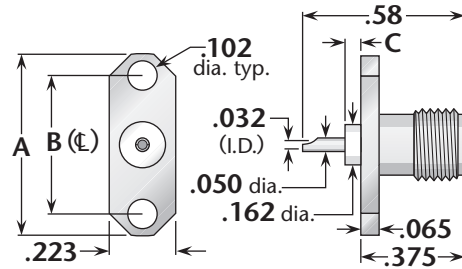
**See page 197 for MIL-PRF-39012 QPL version.**



**Figure 3**  
(11/16" square flange, interchangeable with BNC and TNC standard flange size)



**Figure 4**  
(1" square flange, interchangeable with type N standard flange size)



**Figure 5**  
(2-hole flange)

**See page 197 for MIL-PRF-39012 QPL version.**

Figure	Dimensions			Mounting Figure	Plating		Delta P/N
	A	B	C		Body	Contact	
1	.375	.250	.067	91	Gold	Gold (C)	1313-000-G911
1	.375	.250	.067	91	Passivated	Gold (C)	1313-000-K911
2	.500	.340	.102	05	Gold	Gold (C)	1313-000-G051
2	.500	.340	.102	05	Passivated	Gold (C)	1313-000-K051-2
3	.687	.500	.125	09	Gold	Gold (C)	1313-000-G091
3	.687	.500	.125	09	Passivated	Gold (C)	1313-000-K091
4	1.00	.718	.125	33	Gold	Gold (C)	1313-000-G331
4	1.00	.718	.125	33	Passivated	Gold (C)	1313-000-K331
5	.625	.481	.025	92	Gold	Gold (C)	1313-000-G921
5	.625	.481	.025	92	Passivated	Gold (C)	1313-000-K921
5	.625	.481	.000	92	Gold	Gold (C)	1313-000-G921-2
5	.625	.481	.000	92	Passivated	Gold (C)	1313-000-K921-2

See page 203 for mounting dimensions. • (C) in contact plating column indicates captive contact (epoxy captivated).  
All items available with other flange, contact, and insulator configurations.