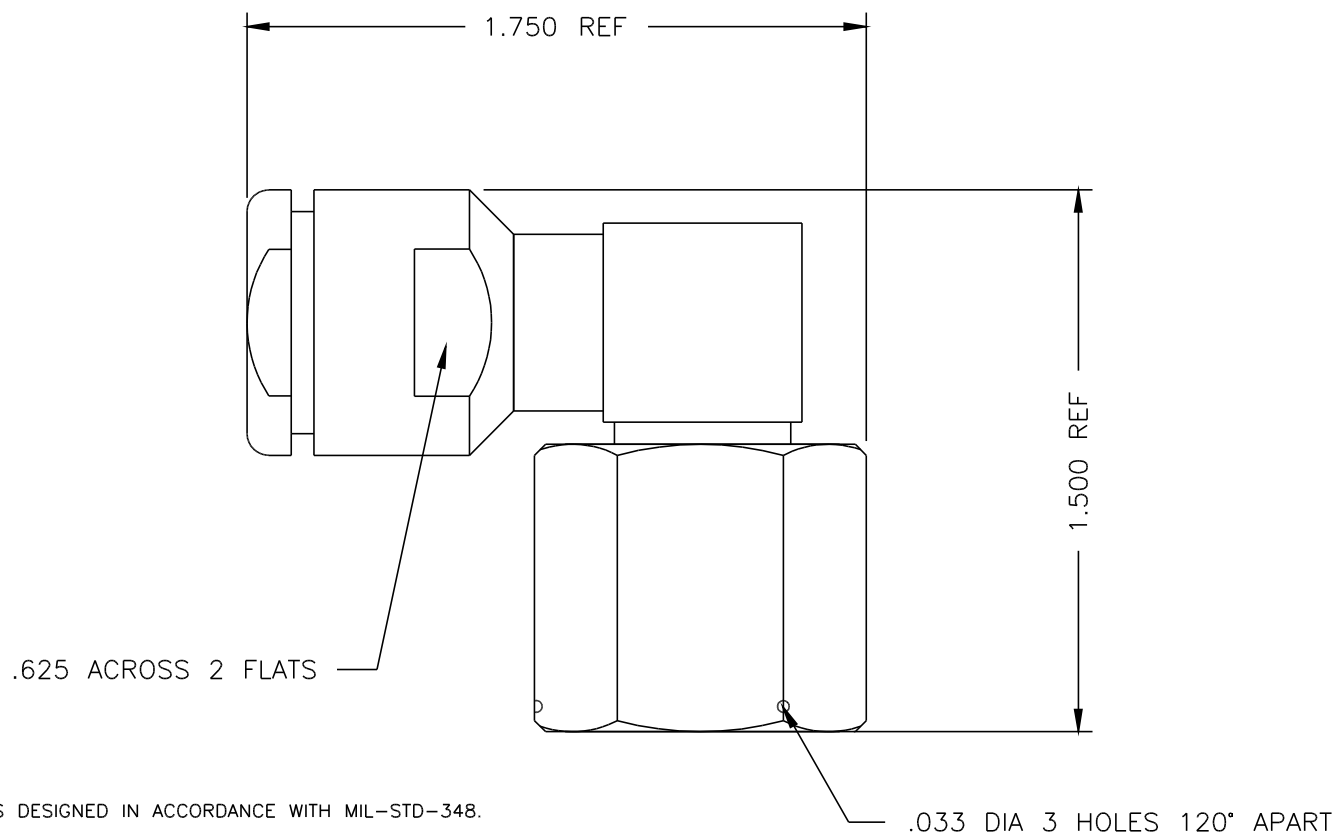




1904-050-N001



NOTES:

1. ASSEMBLED CONNECTOR INTERFACE IS DESIGNED IN ACCORDANCE WITH MIL-STD-348.
2. MATERIAL: BODY & COUPLING NUT- BRASS PER ASTM B16  
CONTACT - BRASS PER ASTM B16.  
INTERFACE CONTACT - BERYLLIUM COPPER PER ASTM B196.  
BUSHING - BRASS PER ASTM B16.  
GASKET - SILICONE RUBBER PER ZZ-R-765  
INSULATOR - TEFLON PER ASTM D1710
3. FINISHES: CONTACTS -GOLD PLATE PER MIL-G-45204.  
ALL OTHER METAL PARTS- NICKEL PLATE PER QQ-N-290.

DELTA ELECTRONICS MFG. CORP. Beverly, MA 01915

TITLE:  
SC R'ANGLE PLUG FOR .250 SEMI RIGID CABLE

Drawn by KD	Scale 2/1	Ckd. by	Engr Appd	FILE NAME: 1904050N001-0001
----------------	--------------	---------	-----------	--------------------------------

UNLESS OTHERWISE SPECIFIED: TOLERANCES: 3 PLACES =  $\pm .005$ , 2 PLACES =  $\pm .02$ , ANGLES =  $\pm 1/2^\circ$

-	OUTLINE	M-DD-95
ALT.	REVISIONS	DATE

THESE DRAWINGS AND SPECIFICATIONS ARE THE PROPERTY OF DELTA ELECTRONICS MFG CORP. AND SHALL NOT BE REPRODUCED, OR COPIED OR USED AS THE BASIS FOR THE MANUFACTURE OR SALE OF APPARATUS OR DEVICES WITHOUT THEIR EXPRESS WRITTEN CONSENT.

CODE IDENT.-00795

1904-050-N001