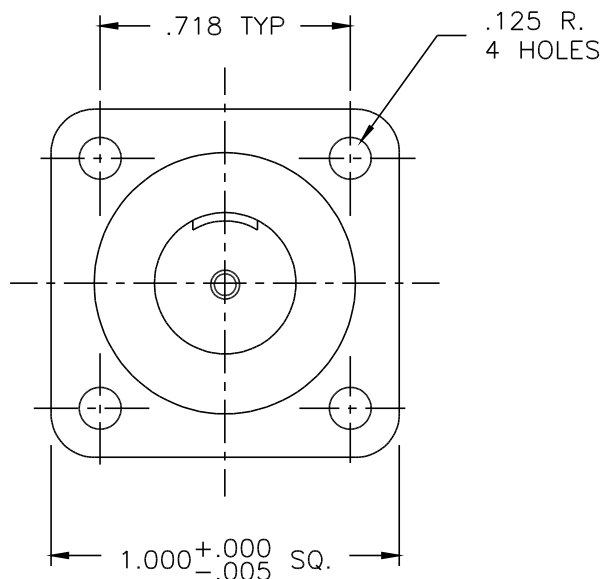
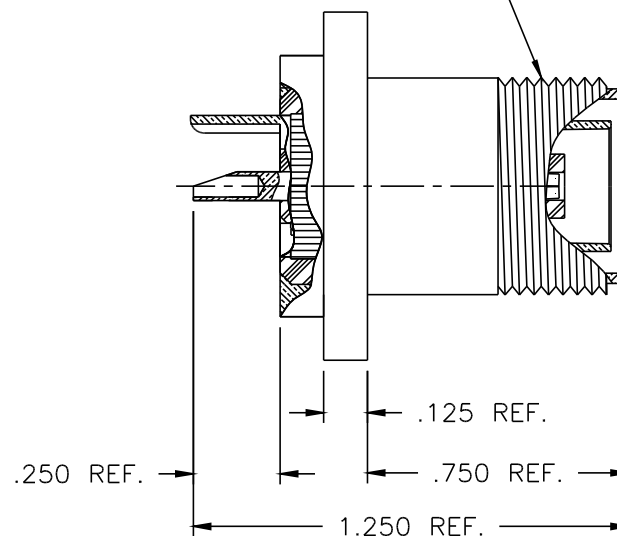




5113-000-A330



5/8-24 UNEF-2A TH'D REF.



NOTES:

1. ASSEMBLED CONNECTOR INTERFACE IS DESIGNED IN ACCORDANCE WITH MIL-STD-348.
2. MATERIAL: BODY - BRASS PER ASTM B16
CONTACT - BERYLLIUM COPPER PER ASTM B196.
INSULATOR - TEFLON PER ASTM D1710
BUSHING - BRASS PER ASTM B16.
MOUNTING PLATE - BRASS PER ASTM B16
3. FINISHES: BODY - SILVER PLATE PER QQ-S-365
CONTACT - GOLD PLATE PER MIL-G-45204
BUSHING - SILVER PLATE PER QQ-S-365

UNLESS OTHERWISE SPECIFIED: TOLERANCES: 3 PLACES = ± 0.005 , 2 PLACES = ± 0.02 , ANGLES = $\pm 1/2^\circ$

A	REVISED	11/18/98
-	OUTLINE	8/19/98
ALT.	REVISIONS	DATE

DELTA ELECTRONICS MFG. CORP. Beverly, MA 01915

TITLE:

TRIAxIAL PANEL MOUNTED RECEPTACLE

Drawn by
BJM
8/19/98

Scale
2/1

Ckd. by

Engr Appd

FILE NAME:
5113000A330-000T

THESE DRAWINGS AND SPECIFICATIONS ARE THE PROPERTY OF DELTA ELECTRONICS MFG CORP. AND SHALL NOT BE REPRODUCED, OR COPIED OR USED AS THE BASIS FOR THE MANUFACTURE OR SALE OF APPARATUS OR DEVICES WITHOUT THEIR EXPRESS WRITTEN CONSENT.

CODE IDENT.-00795

5113-000-A330