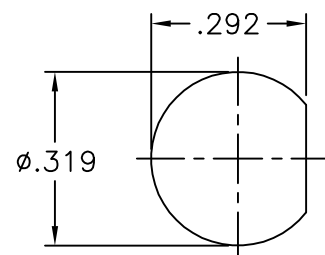
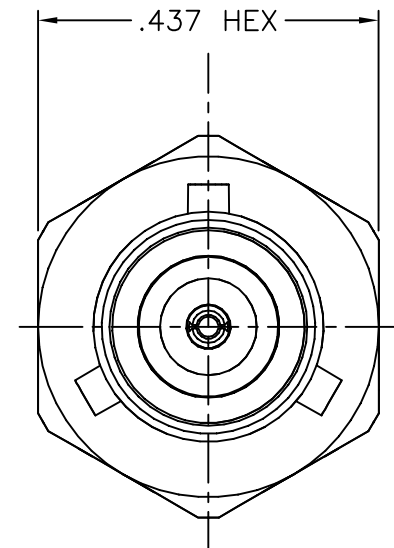
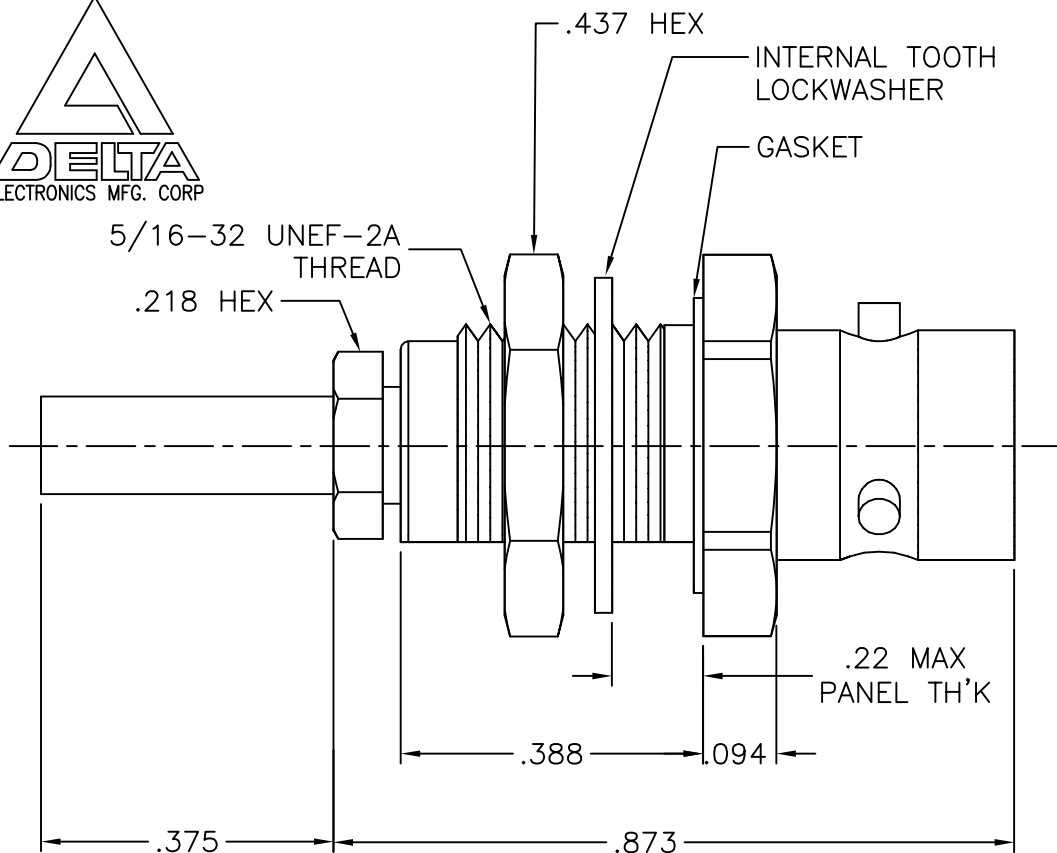
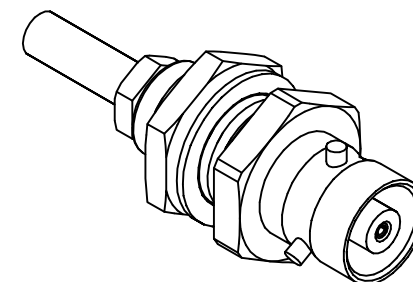




4401038N001-000



RECOMMENDED
MOUNTING FIGURE



ISOMETRIC VIEW

SCALE 2/1

NOTES:

1. ASSEMBLED CONNECTOR INTERFACE IS DESIGNED IN ACCORDANCE WITH MIL-C-55235.
2. MATERIAL: INSULATOR - TEFLON PER ASTM D4894
CONTACT - BERYLLIUM COPPER PER ASTM B196.
GASKET - SILICONE RUBBER PER A-A-59588
LOCKWASHER - SPRING STEEL
ALL OTHER METAL PARTS - BRASS PER ASTM B16
3. FINISHES: CONTACT & SOLDER CLAMP - GOLD PLATE PER ASTM B488
ALL OTHER METAL PARTS - NICKEL PLATE PER QQ-N-290
4. RECOMMENDED TORQUE VALUES: MOUNTING NUT - 12-15 IN-LBS
CLAMP NUT - 3-5 IN-LBS
5. RECOMMENDED CRIMP TOOL M22520/5-33 CLOSURE B (.105 hex)

UNLESS OTHERWISE SPECIFIED: TOLERANCES: 3 PLACES = $\pm .005$, 2 PLACES = $\pm .02$, ANGLES = $\pm 1/2^\circ$, SURFACE FINISH = 63

-	OUTLINE	4/8/15
ALT.	REVISIONS	DATE

THESE DRAWINGS AND SPECIFICATIONS ARE THE PROPERTY OF DELTA ELECTRONICS MFG CORP. AND SHALL NOT BE REPRODUCED, OR COPIED OR USED AS THE BASIS FOR THE MANUFACTURE OR SALE OF APPARATUS OR DEVICES WITHOUT THEIR EXPRESS WRITTEN CONSENT.

DELTA ELECTRONICS MFG. CORP. Beverly, MA 01915

TITLE: TPS B'HEAD MOUNTED CRIMP JACK FOR
RG-178 & 196 CABLE S

Drawn by ADK 4/8/15	Scale 4/1	Ckd. by BJM	Engr Appd BJM	FILE NAME: 4401038N001-000T
---------------------------	--------------	----------------	------------------	--------------------------------

CODE IDENT.-00795

4401038N001-000