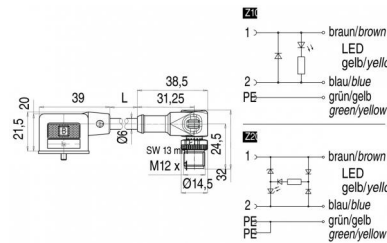


Product	Connecting cable, Female power connector DIN EN 175301-803 - M12 angled connector , PUR 3x0,75 mm ² , wired, LED	Pole	2+2PE
Area	Size A	Article number	79 5705 20 03
		serie 210/A	

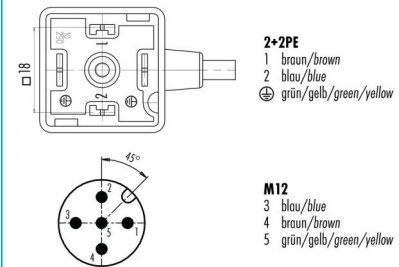
illustration



scale drawing



Contact Arrangement



Technical data

Common values

Connector Design	Connecting cable
Connector locking system	central screw
Termination	IDT connection, crimp, overmoulded on cable
Wire gauge (mm)	0,75 mm ²
Wire gauge (AWG)	20
Upper temperature	+85 °C
Lower temperature	-25 °C

Electrical values

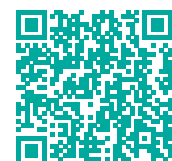
Rated voltage	24 V
Rated impulse voltage	800 V
Pollution degree	3
Overvoltage category	II
Material group	II
Rated current (40 °C)	4 A
Volume resistivity	≤ 15 mΩ
EMV compliance	not shielded
Degree of protection	IP 67
Mechanical operation	> 50 mating cycles

Material

Material of contact	CuSn (bronze), CuZN (brass)
Contact plating	Sn (tin)/ Au (gold)
Material of contact body	PA
Material of housing	PC

Cable data

material housing	PUR
insulation single lead	PVC
single lead structure	24 x 0,2 Cu
cable sheath Ø	6
conductor resistance	26Ω/Km
temperature range cable movable c from	-5
temperature range cable movable c to	70
temperature range cable fixed c from	-25
temperature range cable fixed c to	70
bending radius cable fixed	30 mm
bending radius cable movable	60 mm
cable diameter	6



Contacts: 2+2PE Z10, Cable length 2 m,
 Connecting cable, Female power connector
 DIN EN 175301-803 - M12 angled
 connector ,PUR 3 x 0,75 mm², wired, LED