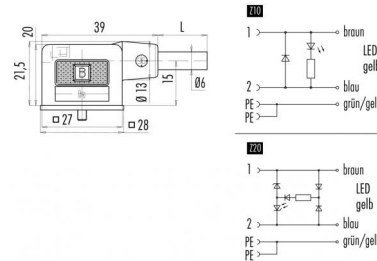


Product	Female solenoid valve connector DIN EN 175301-803, low housing, IP 67, moulded cabel	Pole	2+2PE
Area	Size A	Article number	31 1313 300 510
	serie 210/A		

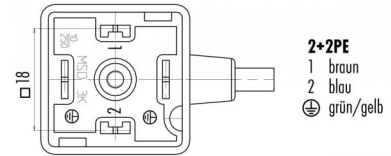
illustration



scale drawing



Contact Arrangement



Technical data

Common values

Connector Design	Female solenoid valve connectors
Connector locking system	central screw
Termination	IDT connection, overmoulded on cable
Wire gauge (mm)	0,75 mm <sup>2</sup>
Wire gauge (AWG)	20
Upper temperature	+85 °C
Lower temperature	-25 °C

Material

Material of contact	CuSn (bronze)
Contact plating	Sn (tin)
Material of contact body	PA
Material of housing	PC

Cable data

material housing	PUR
insulation single lead	PVC
single lead structure	24 x 0,2 Cu
cable sheath Ø	6
conductor resistance	26Ω/Km
temperature range cable movable c from	-5
temperature range cable movable c to	70
temperature range cable fixed c from	-25
temperature range cable fixed c to	70
bending radius cable fixed	30 mm
bending radius cable movable	60 mm
cable diameter	6

Electrical values

Rated voltage	24 V
Rated impulse voltage	800 V
Pollution degree	3
Overvoltage category	III
Material group	III
Rated current (40 °C)	10 A
Volume resistivity	≤ 15 mΩ
EMV compliance	not shielded
Degree of protection	IP 67
Mechanical operation	> 50 mating cycles



Contacts: 2+2PE Z10, Cable length 3 m, Female solenoid valve connector DIN EN 175301-803, low housing, IP 67, moulded cabel PUR 0,75 mm<sup>2</sup>, wired, LED