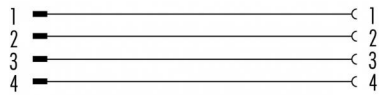


Product Area Adapter Schaltschrankdurchführung, geschirmt, Stecker M8 - Dose M8  
Connecting cables - sensor connectors serie 765

Pole 4  
Article number 09 5251 00 04

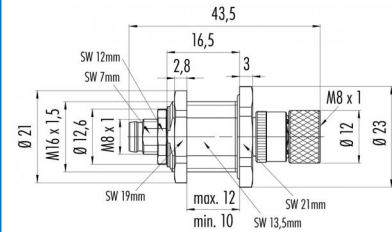
**Belegungspläne**



**illustration**



**scale drawing**

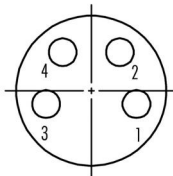
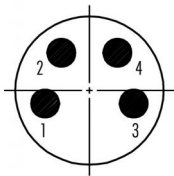


**Contact Arrangement**

You can find the assembly instruction on the next page.

**Stifteinsatz M8**  
**Male insert M8**

**Buchseinsatz M8**  
**Female insert M8**



**Technical data**

**Common values**

Termination	-
Wire gauge (mm)	-
Wire gauge (AWG)	-
Cable outlet	-
Upper temperature	+85 °C
Lower temperature	-25 °C

**Material**

Material of contact body	PA (UL 94 HB)
Material of housing	zinc diecasting, nickel plated / brass nickel plated

**Cable data**

**Electrical values**

Rated voltage	250 V
Rated impulse voltage	2500 V
Pollution degree	3
Overvoltage category	II
Material group	III
Rated current (40°C)	4 A
Volume resistivity	≤ 3 mΩ
Degree of protection	IP 67
Mechanical operation	>100 mating cycles

Polzahl 4: Adapter Schaltschrankdurchführung, geschirmt, Stecker M8 - Dose M8



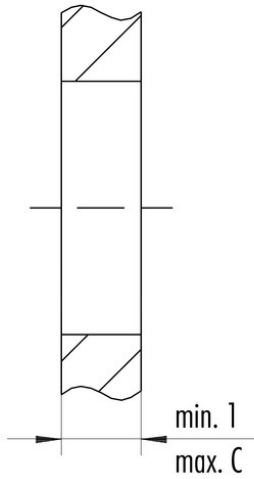
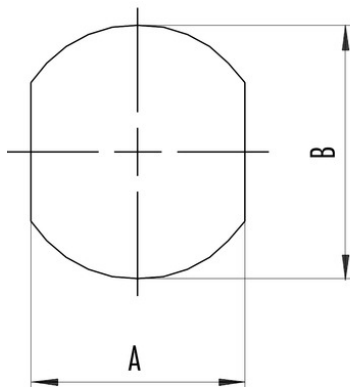
Product Adapter Schaltschrankdurchführung, geschirmt, Stecker M8 - Dose M8  
Area Connecting cables - sensor connectors serie 765

Pole 4  
Article number 09 5251 00 04

Date: 2014-07-20 - Page 2 of 2

Installation instructions / Mounting cutout

Schaltschrankdurchführung mit Durchgangsbohrung  
Lead-through for control cabinet with bore hole



	A	B	C
M8	13,5	16,1	12
M12	18,2	20,1	9