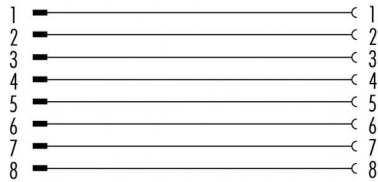


Product Area	Adapter Lead-through for control cabinet Connecting cables - sensor connectors	serie 765	Pole	8
			Article number	09 5244 00 08

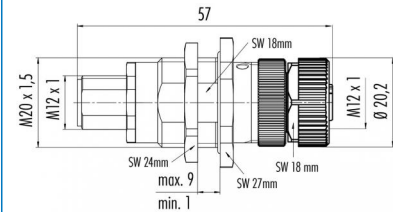
Belegungspläne



illustration



scale drawing

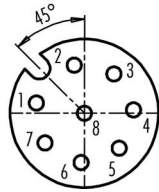
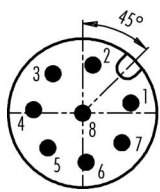


Contact Arrangement

You can find the assembly instruction on the next page.

Stifteinsatz M12
Male insert M12

Buchseinsatz M12
Female insert M12



Technical data

Common values

Connector Design	Adapter
Connector locking system	Screw
Upper temperature	+85 °C
Lower temperature	-25 °C

Material

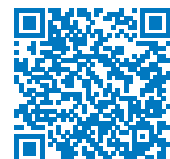
Material of contact	CuZn (brass)
Contact plating	Au (gold)
Material of contact body	PA (UL 94 HB)
Material of housing	zinc diecasting, nickel plated / brass nickel plated

Electrical values

Rated voltage	30 V
Rated impulse voltage	800 V
Pollution degree	3
Overvoltage category	II
Material group	III
Rated current (40°C)	2 A
Volume resistivity	≤ 3 mΩ
Degree of protection	IP 67
Mechanical operation	>100 mating cycles

Cable data

Contacts 8: Adapter Lead-through for control cabinet



Product Area Adapter Lead-through for control cabinet
Connecting cables - sensor connectors

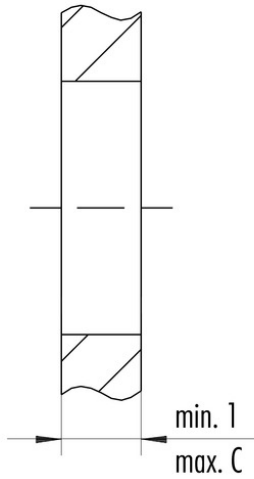
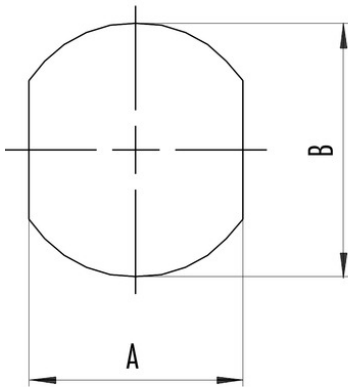
serie 765

Pole 8
Article number 09 5244 00 08

Date: 2014-07-20 - Page 2 of 2

Installation instructions / Mounting cutout

Schaltschrankdurchführung mit Durchgangsbohrung
Lead-through for control cabinet with bore hole



	A	B	C
M8	13,5	16,1	12
M12	18,2	20,1	9