

Product Area Male socket front fastened, dip solder, PG 9  
M12 connectors B-Coding

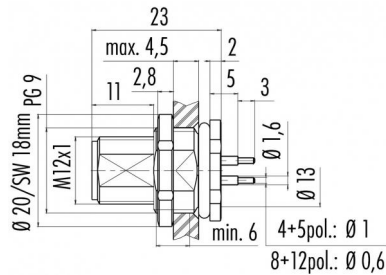
serie 715/766

Pole 4  
Article number 09 4431 90 04

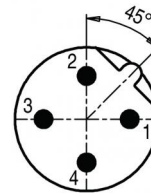
illustration



scale drawing



Contact Arrangement



|   | X     | Y     |
|---|-------|-------|
| 1 | 2,50  | 0,00  |
| 2 | 0,00  | 2,50  |
| 3 | -2,50 | 0,00  |
| 4 | 0,00  | -2,50 |

You can find the assembly instruction on the next page.

Technical data

Common values

|                          |             |
|--------------------------|-------------|
| Connector Design         | Male socket |
| Connector locking system | Screw       |
| Termination              | dip solder  |
| Wire gauge (mm)          | -           |
| Wire gauge (AWG)         | -           |
| Upper temperature        | +85 °C      |
| Lower temperature        | -40 °C      |

Material

|                          |                                       |
|--------------------------|---------------------------------------|
| Material of contact      | CuZn (brass)                          |
| Contact plating          | Au (gold)                             |
| Material of contact body | PA                                    |
| Material of housing      | brass, zinc diecasting, nickel plated |

Electrical values

|                       |                    |
|-----------------------|--------------------|
| Rated voltage         | 250 V              |
| Rated impulse voltage | 2500 V             |
| Pollution degree      | 3                  |
| Overvoltage category  | II                 |
| Material group        | II                 |
| Rated current (40°C)  | 4 A                |
| Volume resistivity    | ≤ 3 mΩ             |
| EMV compliance        | not shielded       |
| Degree of protection  | IP 68              |
| Mechanical operation  | >100 mating cycles |

Cable data

|                              |   |
|------------------------------|---|
| material housing             | - |
| insulation single lead       | - |
| single lead structure        | - |
| conductor resistance         | - |
| bending radius cable fixed   | - |
| bending radius cable movable | - |

Contacts: 4, male socket, front fastened, dip solder



Product Male socket front fastened, dip solder, PG 9  
Area M12 connectors B-Coding

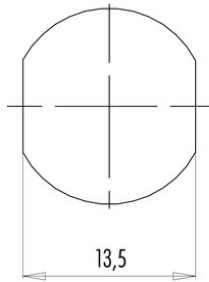
serie 715/766

Pole 4  
Article number 09 4431 90 04

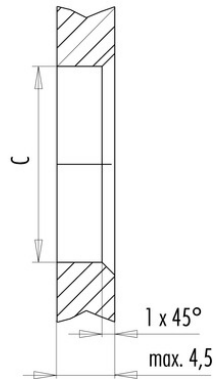
Date: 2014-07-20 - Page 2 of 2

Installation instructions / Mounting cutout

Mit Fläche als Verdrehenschutz  
With flats as anti-rotation device



Mit Durchgangsbohrung  
With bore hole



|         | c    |
|---------|------|
| PG 9    | 15,3 |
| M16x1,5 | 16,1 |

Anzugsdrehmoment/Tightening moment

Metallgehäuse/Metal housing 6,25 Nm  
Kunststoffgehäuse/Plastic housing 3,75 Nm