

Product Male socket, front fastened, dip solder, PG 9
Area M12 connectors A-Coding

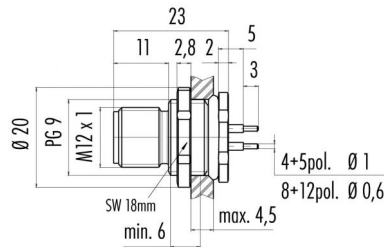
serie 713/763

Pole 12
Article number 09 3491 90 12

illustration

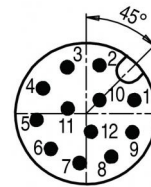


scale drawing



Ausführung mit Zink Druckgussgehäuse
Version with zinc diecasted housing

Contact Arrangement



| | X | Y |
|----|-------|-------|
| 1 | 2,80 | 0,78 |
| 2 | 0,78 | 2,80 |
| 3 | -1,09 | 2,69 |
| 4 | -2,51 | 1,46 |
| 5 | -2,88 | -0,37 |
| 6 | -2,05 | -2,05 |
| 7 | -0,37 | -2,88 |
| 8 | 1,46 | -2,51 |
| 9 | 2,69 | -1,09 |
| 10 | 0,78 | 0,78 |
| 11 | -1,06 | 0,29 |
| 12 | 0,29 | -1,06 |

You can find the assembly instruction on the next page.

Technical data

Common values

| | |
|--------------------------|----------------------|
| Connector Design | Male socket |
| Connector locking system | Screw |
| Termination | dip solder |
| Wire gauge (mm) | 0,14 mm ² |
| Wire gauge (AWG) | 26 |
| Upper temperature | +85 °C |
| Lower temperature | -40 °C |

Material

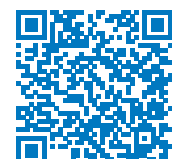
| | |
|--------------------------|--------------------------------|
| Material of contact | CuZn (brass) |
| Contact plating | Au (gold) |
| Material of contact body | PA |
| Material of housing | zinc diecasting, nickel plated |

Cable data

Contacts 12: Male socket, front fastened, dip solder, PG 9

Electrical values

| | |
|-----------------------|--------------------|
| Rated voltage | 30 V |
| Rated impulse voltage | 500 V |
| Pollution degree | 3 |
| Overvoltage category | II |
| Material group | II |
| Rated current (40°C) | 2 A |
| Volume resistivity | ≤ 3 mΩ |
| Degree of protection | IP 68 |
| Mechanical operation | >100 mating cycles |



Product Male socket, front fastened, dip solder, PG 9
Area M12 connectors A-Coding

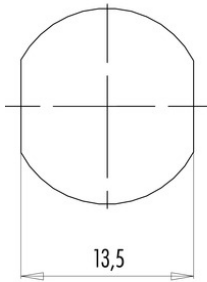
serie 713/763

Pole 12
Article number 09 3491 90 12

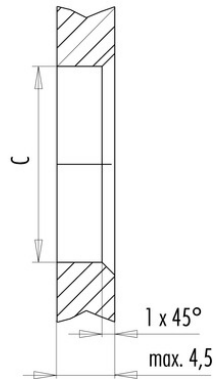
Date: 2014-07-20 - Page 2 of 2

Installation instructions / Mounting cutout

Mit Fläche als Verdrehschutz
With flats as anti-rotation device



Mit Durchgangsbohrung
With bore hole



| | c |
|---------|------|
| PG 9 | 15,3 |
| M16x1,5 | 16,1 |

Anzugsdrehmoment/Tightening moment

Metallgehäuse/Metal housing 6,25 Nm
Kunststoffgehäuse/Plastic housing 3,75 Nm