

Product Area Female socket with dip solder contacts
M5 connectors

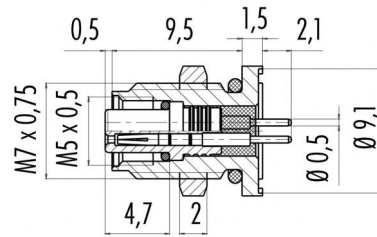
serie 707

Pole 3
Article number 09 3106 81 03

illustration



scale drawing



Contact Arrangement



| | X | Y |
|---|-------|-------|
| 1 | 0,63 | -0,63 |
| 2 | - | - |
| 3 | -0,63 | 0,63 |
| 4 | 0,63 | 0,63 |

- 1 braun/brown
- 2 nicht kontaktiert/not assembled
- 3 blau/blue
- 4 schwarz/black

Technical data

Common values

| | |
|--------------------------|---------------|
| Connector Design | Female socket |
| Connector locking system | Screw |
| Termination | dip solder |
| Wire gauge (AWG) | - |
| Cable outlet | - |
| Upper temperature | +80 °C |
| Lower temperature | -25 °C |

Electrical values

| | |
|-----------------------|--------------------|
| Rated voltage | 60 V |
| Rated impulse voltage | 800 V |
| Pollution degree | 3 |
| Overvoltage category | II |
| Material group | I |
| Rated current (40°C) | 1 A |
| Volume resistivity | ≤ 3 mΩ |
| Degree of protection | IP 67 |
| Mechanical operation | >100 mating cycles |

Material

| | |
|--------------------------|----------------------------|
| Material of contact | CuSn (bronze) |
| Contact plating | Au (gold) |
| Material of contact body | PA |
| Material of housing | CUZn (brass nickel plated) |

Cable data

| | |
|--|-----|
| material housing | - |
| insulation single lead | - |
| single lead structure | - |
| temperature range cable movable c from | -5 |
| temperature range cable movable c to | 80 |
| temperature range cable fixed c from | -25 |
| temperature range cable fixed c to | 80 |
| bending radius cable fixed | - |
| bending radius cable movable | - |

Contacts 3: Female socket with dip solder contacts

