

Product Flanschdose, löten, von vorn verschraubbar
Area M16 connectors IP 67

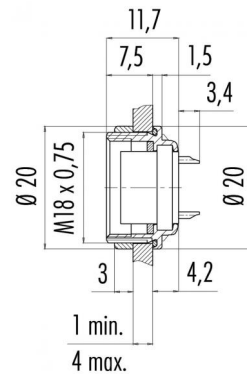
serie 423/ 723/ 425

Pole 16
Article number 09 0508 80 16

illustration



scale drawing



You can find the assembly instruction on the next page.

Technical data

Common values

Connector Design	Female socket
Connector locking system	Screw
Termination	solder
Wire gauge (mm)	0,25 mm ²
Wire gauge (AWG)	24
Upper temperature	+95 °C
Lower temperature	-40 °C

Material

Material of contact	CuSn (bronze)
Contact plating	Au (gold)
Material of contact body	PBT (UL 94 V-0)
Material of housing	zinc diecasting, nickel plated

Cable data

Contacts 16, female socket, solder, front fastened, 12 - 19 Contacts, gold plated contacts

Electrical values

Rated voltage	60 V
Rated impulse voltage	500 V
Pollution degree	1
Overvoltage category	I
Material group	III
Rated current (40°C)	3 A
Volume resistivity	≤ 3 mΩ
EMV compliance	shielded
Degree of protection	IP 67
Mechanical operation	>500 mating cycles



Product Flanschdose, löten, von vorn verschraubbar
Area M16 connectors IP 67

serie 423/ 723/ 425

Pole 16
Article number 09 0508 80 16

Date: 2014-07-20 - Page 2 of 2

Installation instructions / Mounting cutout

