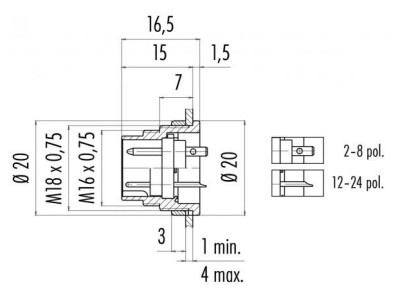


Product Area	Male socket, solder, front fastened M16 connectors IP 40	serie 581/ 680/ 682	Pole Article number	12 09 0331 80 12
--------------	---	---------------------	---------------------	---------------------

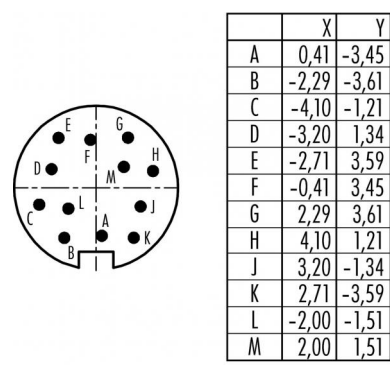
**illustration**



**scale drawing**



**Contact Arrangement**



You can find the assembly instruction on the next page.

**Technical data**

**Common values**

Connector Design	Male socket
Connector locking system	Screw
Termination	solder
Wire gauge (mm)	0,25 mm <sup>2</sup>
Wire gauge (AWG)	24
Upper temperature	+85 °C
Lower temperature	-40 °C

**Material**

Material of contact	CuZn (brass)
Contact plating	Au (gold)
Material of contact body	PBT (UL 94 V-0)
Material of housing	zinc diecasting, nickel plated

**Cable data**

Contacts 12, male socket, solder, front fastened, gold plated contacts

**Electrical values**

Rated voltage	60 V
Rated impulse voltage	500 V
Pollution degree	I
Overvoltage category	I
Material group	III
Rated current (40°C)	3 A
Volume resistivity	≤ 3 mΩ
EMV compliance	shielded
Degree of protection	IP 40
Mechanical operation	>500 mating cycles



Product Male socket, solder, front fastened  
Area M16 connectors IP 40

serie 581/ 680/ 682

Pole 12  
Article number 09 0331 80 12

Date: 2014-07-20 - Page 2 of 2

Installation instructions / Mounting cutout

