

Adapters—N Jack to Other Series

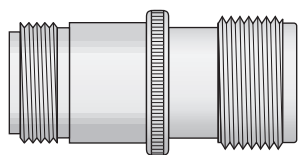


Figure 1
(N jack-SC jack)

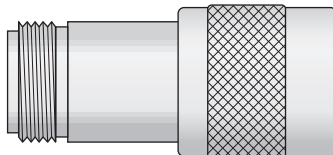


Figure 2
(N jack-SC plug)

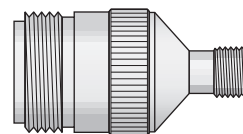


Figure 3
(N jack-SMA jack)

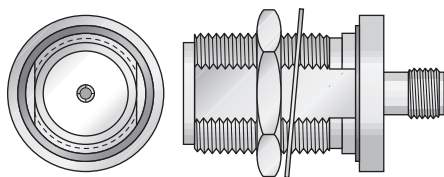


Figure 4
(N jack-SMA jack)

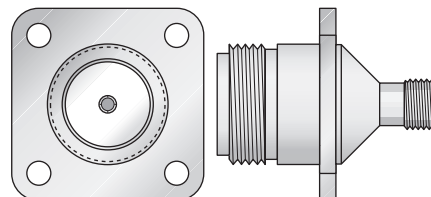


Figure 5
(N jack-SMA jack)

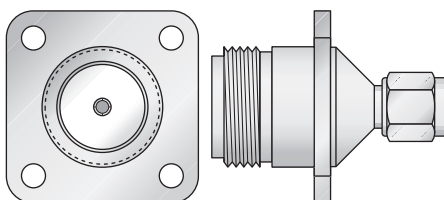


Figure 6
(N jack-SMA plug)

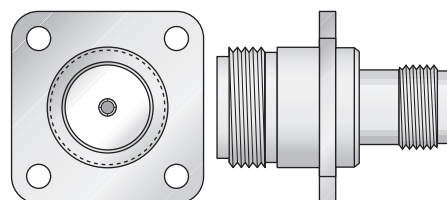


Figure 7
(N jack-TNC jack)

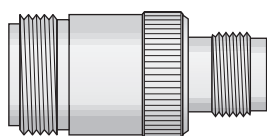


Figure 8
(N jack-TNC jack)

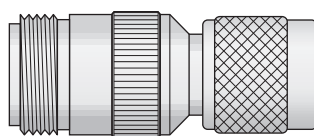


Figure 9
(N jack-TNC plug)

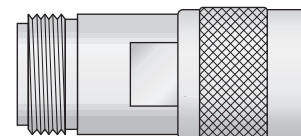


Figure 10
(N jack-UHF plug)

Figure	Adapter Ends	Length	Mounting Figure	Plating		Delta P/N
				Body	Contact	
1	N jack-SC jack	1.63	None	Nickel	Silver (C)	2228-000-N000-12
2	N jack-SC plug	1.53	None	Nickel	Silver (C)	2234-000-N000-55
3	N jack-SMA jack	1.24	None	Nickel	Gold (C)	2228-000-N00M-10
4	N jack-SMA jack	1.26	72	Nickel	Gold (C)	2226-000-N721-1
5	N jack-SMA jack	1.24	33	Nickel	Gold (C)	2225-000-N331-5
6	N jack-SMA plug	1.28	33	Nickel	Gold (C)	2234-000-N331-3
7	N jack-TNC jack	1.39	33	Nickel	Gold (C)	2225-000-N331-8
8	N jack-TNC jack	1.39	None	Nickel	Gold (C)	2228-000-N001-2
9	N jack-TNC plug	1.53	None	Nickel	Gold (C)	2234-000-N001-9
10	N jack-UHF plug	1.56	None	Nickel	Silver (C)	UG-83B/U

See page 203 for mounting dimensions. • (C) in contact plating column indicates captive contact.
See page 6 for alternate body plating information.