

## Panel Jack Receptacle—Solder Pot Contact

**Figure 1**

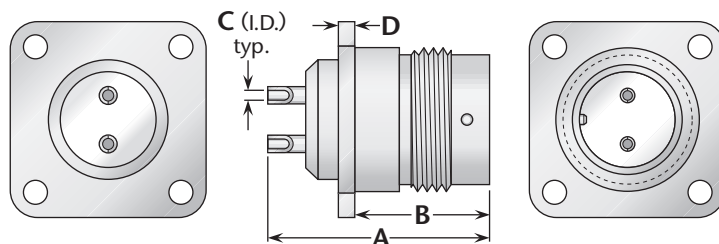
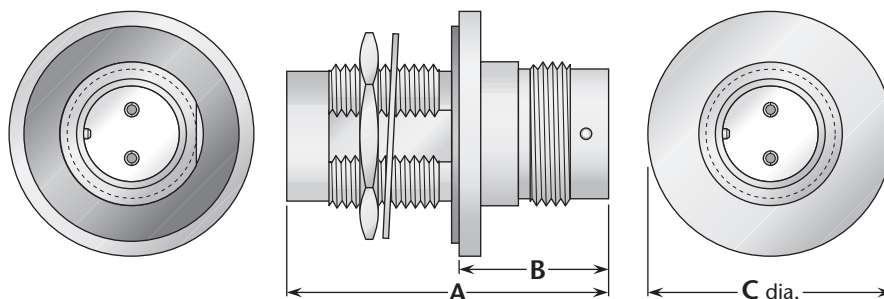


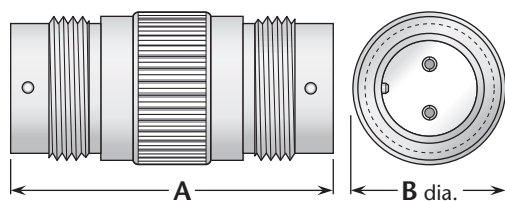
Figure	Dimensions				Mounting Figure	Plating		Delta P/N
	A	B	C	D		Body	Contact	
1	1.18	.71	.059	.080	33	Nickel	Silver (C)	UG-422/U

## Bulkhead Jack-Jack Adapter (Connects two plugs)



Dimensions			Max. Panel	Mounting Figure	Plating		Delta P/N
A	B	C			Body	Contact	
1.67	.88	1.25	.25	51	Nickel	Silver (C)	UG-493A/U

## Straight and Right Angle Adapters



**Figure 1**  
(Straight jack-jack; connects two plugs)

**Figure 2**  
(Right angle jack-plug; connects one plug and one jack)

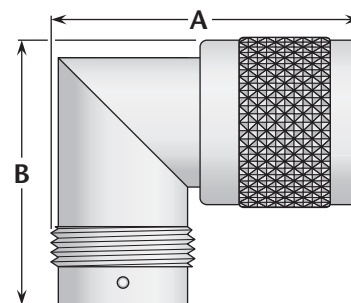


Figure	Dimensions		Plating		Delta P/N
	A	B	Body	Contact	
1	1.67	.75	Nickel	Silver (C)	2626-000-N000
2	1.56	1.38	Nickel	Silver (C)	UG-981/U

See page 203 for mounting dimensions.  
(C) in contact plating column indicates captive contact. • See page 6 for alternate body plating information.