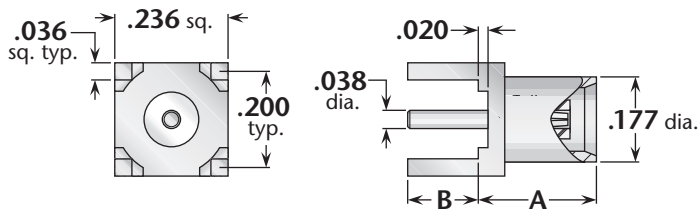
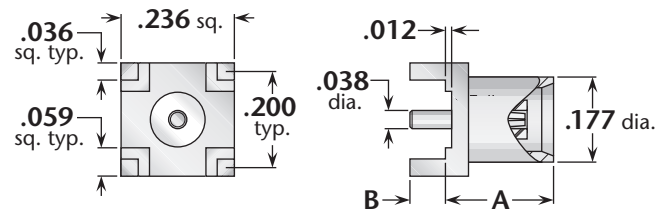


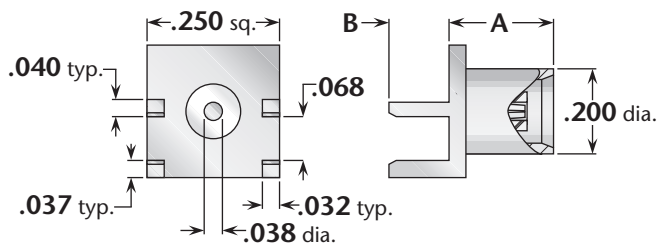
## Straight Printed-Circuit Board Jack Receptacles



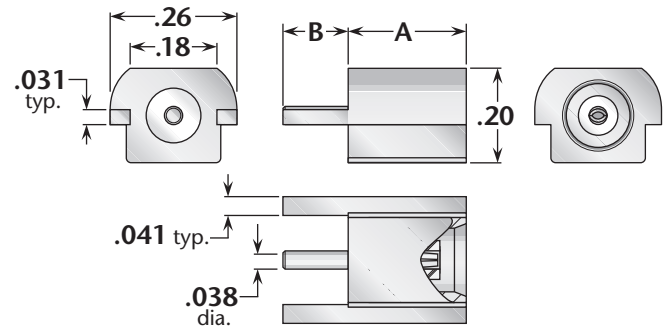
**Figure 1**  
(Through-hole mount)



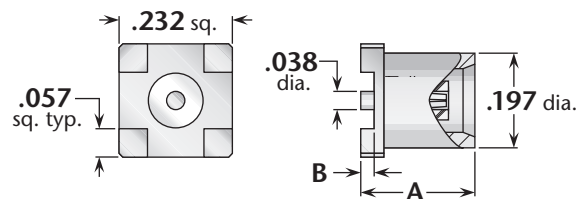
**Figure 2**  
(Through-hole mount)



**Figure 3**  
(Edge mount, for .062" thick board)



**Figure 4**  
(Flush edge mount)



**Figure 5**  
(Surface mount)

Figure	Dimensions		Max. Board	Mounting Figure	Plating		Delta P/N
	A	B			Body	Contact	
1	.240	.155	.100	PCB06	Gold*	Gold (C)	9867-000-G001-500
2	.240	.059	.040	PCB06	Gold*	Gold (C)	9867-000-G001-501
3	.250	.125	N/A	***	Gold*	Gold (C)	9867-000-G91P-500
4	.246	.120	N/A	***	Gold*	Gold (C)	9867-000-G001-503
5	.236	.016	N/A	***	Gold*	Gold (C)	9867-000-G001-504

\* Also available with nickel-plated body—change **G** in Delta part number to **N**. • See page 203 for mounting dimensions.  
(C) in contact plating column indicates captive contact. • \*\*\*Contact factory for mounting information.