

Printed-Circuit Board Jack Receptacles

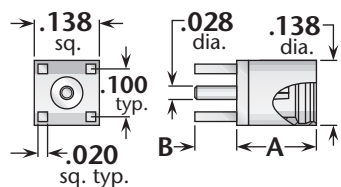


Figure 1
(Straight through-hole mount)

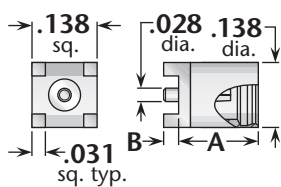


Figure 2
(Straight surface mount)

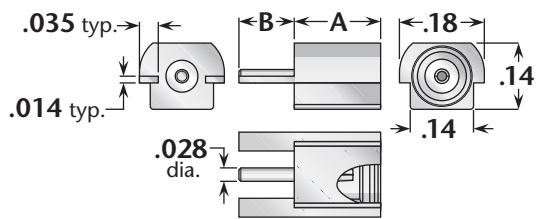


Figure 3
(Straight flush edge mount)

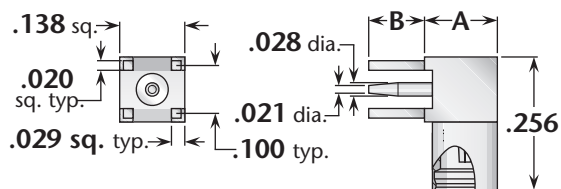


Figure 4
(Right angle through-hole mount)

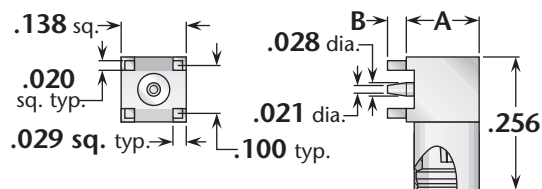


Figure 5
(Right angle surface mount)

Figure	Dimensions		Max. Board	Mounting Figure	Plating		Delta P/N
	A	B			Body	Contact	
1	.171	.120	.100	PCB08	Gold*	Gold (C)	9567-000-G001-500
1	.166	.031	.020	PCB08	Gold*	Gold (C)	9567-000-G001-501
2	.166	.031	N/A	**	Gold*	Gold (C)	9567-000-G001-503
3	.171	.120	N/A	**	Gold*	Gold (C)	9567-000-G001-502
4	.150	.118	.100	PCB08	Gold*	Gold (C)	9569-000-G001-500
5	.150	.031	N/A	**	Gold*	Gold (C)	9569-000-G001-501

Printed-Circuit Board Plug Receptacles

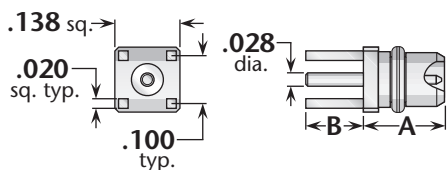


Figure 1
(Straight through-hole mount)

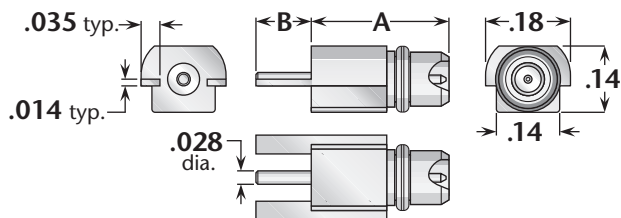


Figure 2
(Straight flush edge mount)

Figure	Dimensions		Max. Board	Mounting Figure	Plating		Delta P/N
	A	B			Body	Contact	
1	.171	.120	.100	PCB08	Gold*	Gold (C)	9568-000-G001-500
2	.282	.120	N/A	**	Gold*	Gold (C)	9568-000-G001-501
2	.173	.120	N/A	**	Gold*	Gold (C)	9568-000-G001-502

* Also available with nickel-plated body—change G in Delta part number to N. • See page 203 for mounting dimensions.
**Contact factory for mounting dimensions. • (C) in contact plating column indicates captive contact.