

Jack Receptacles—Solder Pot Contact

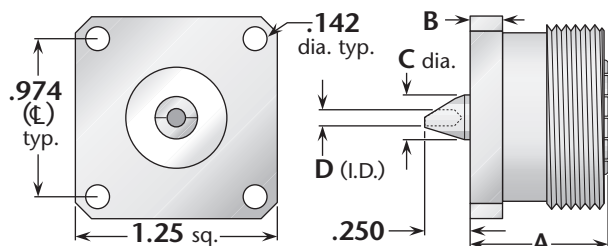


Figure 1
(Standard flange)

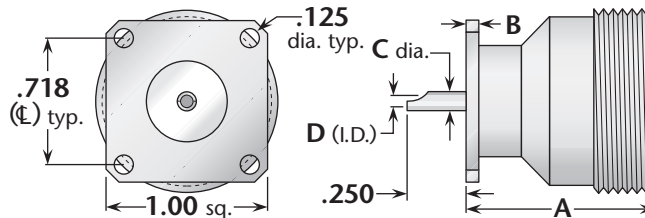
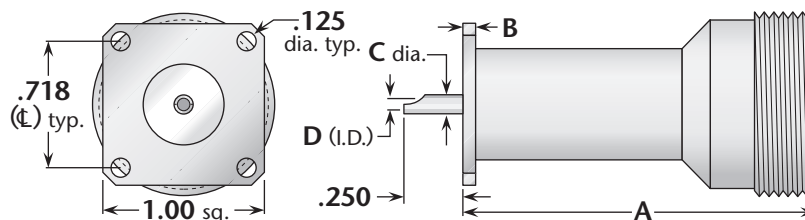
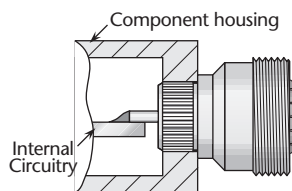


Figure 2
(1" square flange, interchangeable with type N standard flange size)

Figure 3
(1" square flange, interchangeable with type N standard flange size)



Delta PressMount Receptacles



These connectors eliminate the need for complicated mounting hole patterns and mounting hardware.

They are simply pressed into a single through hole, and the precisely-engineered knurled mounting section provides retention strength greater than normal mating and unmating forces. An integral shoulder provides a positive stop when mounting.

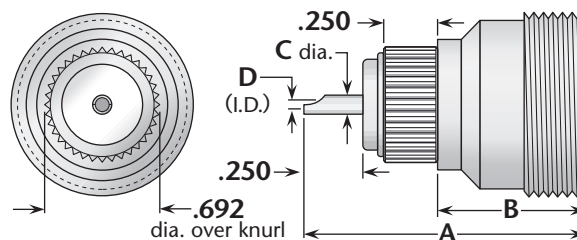


Figure 4
(PressMount)

Figure	Dimensions				Mounting Figure	Plating		Delta P/N
	A	B	C	D		Body	Contact	
1	.850	.197	.274	.100	See above	Silver	Silver (C)	9213-000-A911-3
2	1.17	.080	.120	.100	33	Silver	Gold (C)	9213-000-A911-4
3	2.17	.080	.120	.100	33	Silver	Gold (C)	9213-000-A911-10
4	1.42	.819	.120	.100	.688±.001 dia.	Silver	Gold (C)	9220-000-A911

Panel Jack Receptacle—Threaded Contact

Figure 1
(Standard flange)

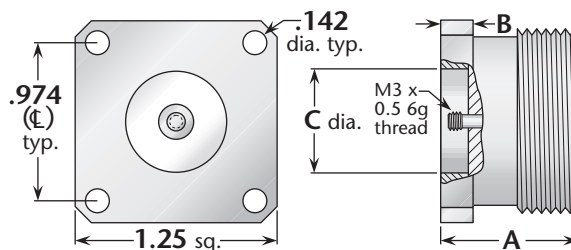


Figure	Dimensions			Mounting Figure	Plating		Delta P/N
	A	B	C		Body	Contact	
1	.850	.197	.630	See above	Silver	Silver (C)	9258-000-A911

(C) in contact plating column indicates captive contact. • See page 6 for alternate body plating information.

All items are available with other flange sizes and contact configurations.

7/16 connectors with 1" square flanges have lower maximum power rating than standard-flange connectors—contact factory for details.