

Panel Jack Receptacle—Tab Contact

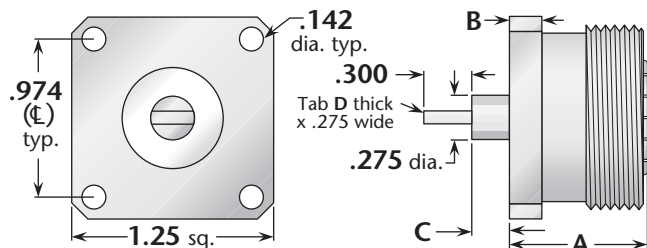


Figure 1
(Standard flange)

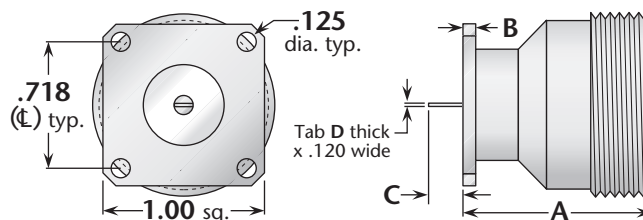


Figure 2
(1" square flange, interchangeable
with type N standard flange size)

Figure	Dimensions				Mounting Figure	Plating		Delta P/N
	A	B	C	D		Body	Contact	
1	.850	.197	.200	.100	See above	Silver	Silver (C)	9258-000-A911-6
2	1.17	.080	.100	.005/.008	33	Silver	Gold (C)	9258-000-A331

Panel Jack Receptacle—Slotted Contact

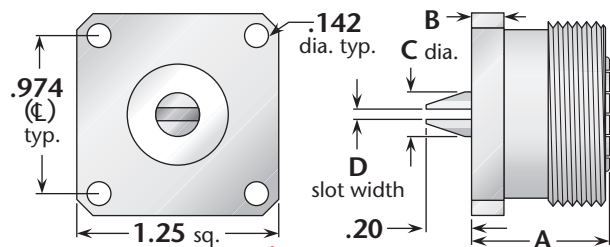


Figure 1
(Standard flange)

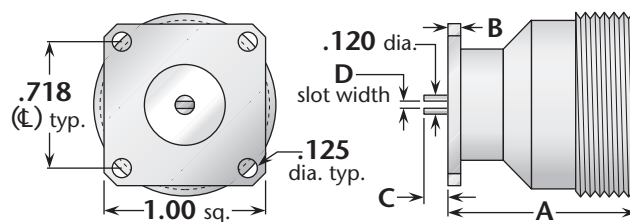


Figure 2
(1" square flange, interchangeable
with type N standard flange size)

Figure	Dimensions				Mounting Figure	Plating		Delta P/N
	A	B	C	D		Body	Contact	
1	.850	.197	.276	.095	See above	Silver	Silver (C)	9258-000-A911-7
2	1.17	.080	.050	.013/.017	33	Silver	Gold (C)	9258-000-A331-10

Panel Jack Receptacle—Post Contact

Figure 1
(1" square flange, interchangeable
with type N standard flange size)

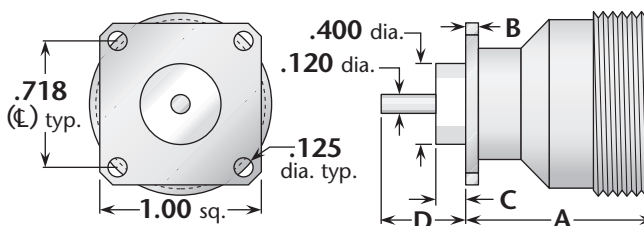


Figure	Dimensions				Mounting Figure	Plating		Delta P/N
	A	B	C	D		Body	Contact	
1	1.17	.080	.325	.500	33	Silver	Silver (C)	9258-000-A331-5
1	1.17	.080	.000	.750	33	Silver	Silver (C)	9258-000-A331-2
1	1.17	.080	.000	.562	33	Silver	Silver (C)	9258-000-A331-3

(C) in contact plating column indicates captive contact. • See page 6 for alternate body plating information.

All items are available with other flange sizes and contact configurations.

7/16 connectors with 1" square flanges have lower maximum power rating than standard-flange connectors—contact factory for details.