

Plug Receptacles—Solder Pot Contact

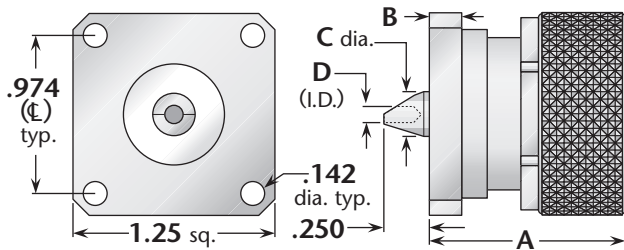


Figure 1
(Standard flange)

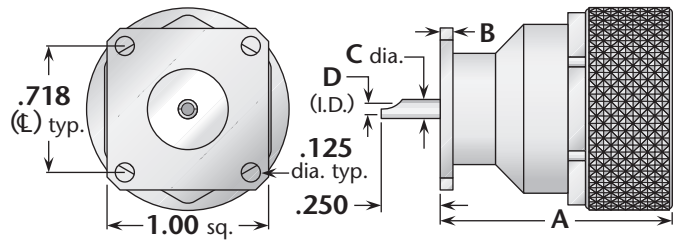
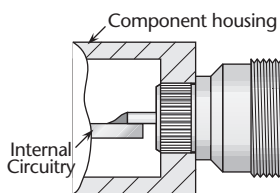


Figure 2
(1" square flange, interchangeable
with type N standard flange size)



Delta PressMount Receptacles

These connectors eliminate the need for complicated mounting hole patterns and mounting hardware.

They are simply pressed into a single through hole, and the precisely-engineered knurled mounting section provides retention strength greater than normal mating and unmating forces. An integral shoulder provides a positive stop when mounting.

Figure 3
(PressMount)

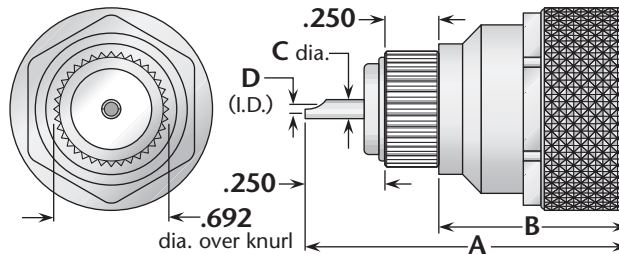


Figure	Dimensions				Mounting Figure	Plating		Delta P/N
	A	B	C	D		Body	Contact	
1	1.21	.197	.274	.100	See above	Silver	Silver (C)	9223-000-A911
2	1.40	.080	.120	.100	33	Silver	Gold (C)	9223-000-A911-3
3	1.65	1.05	.120	.100	.688±.001 dia.	Silver	Gold (C)	9224-000-A911

Panel Plug Receptacle—Threaded Contact

Figure 1
(Standard flange)

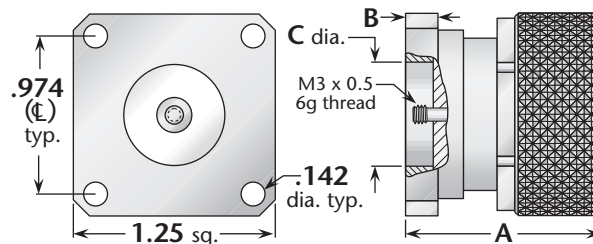


Figure	Dimensions			Mounting Figure	Plating		Delta P/N
	A	B	C		Body	Contact	
1	1.21	.197	.630	See above	Silver	Silver (C)	9223-000-A911-1

(C) in contact plating column indicates captive contact. • See page 6 for alternate body plating information.

All items are available with other flange sizes and contact configurations.

7/16 connectors with 1" square flanges have lower maximum power rating than standard-flange connectors—contact factory for details.