

Panel Jack and Plug Receptacles—Square Flange

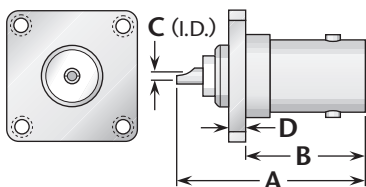


Figure 1
(Solder pot contact, $\frac{11}{16}$ " square flange)

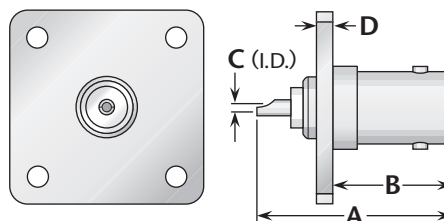


Figure 2
(Solder pot contact, 1" square flange,
interchangeable with type N standard flange size)

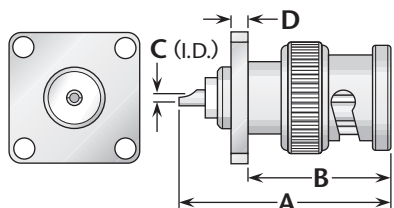


Figure 3
(Solder pot contact, $\frac{3}{4}$ " square flange)

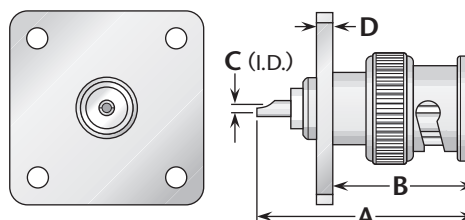


Figure 4
(Solder pot contact, 1" square flange,
interchangeable with type N standard flange size)

Figure	Dimensions				Mounting Figure	Plating		Delta P/N
	A	B	C	D		Body	Contact	
1	1.06	.63	.030	.090	09	Nickel	Gold (C)	7513-000-N091
2	1.06	.63	.030	.080	33	Nickel	Gold (C)	7513-000-N331-2
3	1.19	.80	.030	.090	18	Nickel	Gold (C)	7523-000-N180
4	1.19	.80	.030	.080	33	Nickel	Gold (C)	7523-000-N331-1

Receptacles for Printed Circuit Boards

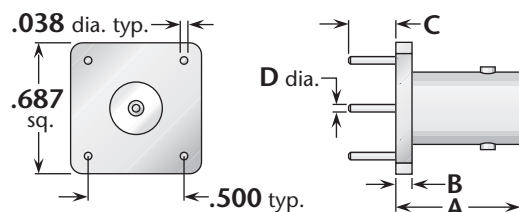


Figure 1

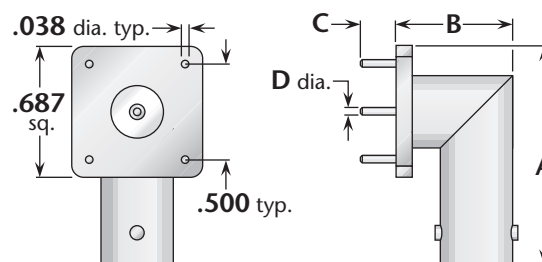


Figure 2

Figure	Dimensions				Max. Board Thickness	Mounting Figure	Plating		Delta P/N
	A	B	C	D			Body	Contact	
1	.65	.085	.250	.038	.125	PCB02	Nickel	Gold (C)	7567-000-N13P-1
2	1.34	.52	.125	.038	.063	PCB02	Nickel	Silver (C)	7569-000-N13P

(C) in contact plating column indicates captive contact. • See page 203 for mounting dimensions.
See page 6 for alternate body plating information.