

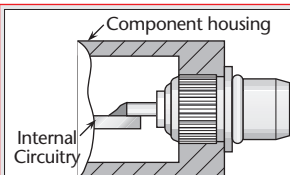
## General Description

Delta BMA series plugs are compact, high-performance connectors that mate with all standard BMA series jacks. Designed to meet all applicable MIL-PRF-39012 requirements, they offer good electrical performance up to 22 GHz.

These connectors are ideal for use in rack-and-panel applications.

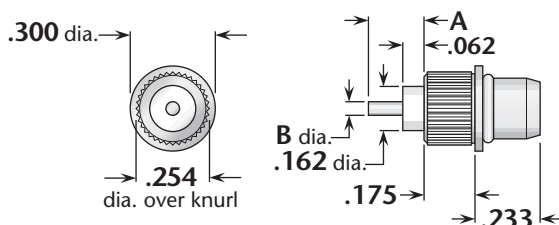
Current configurations include PressMount plug receptacles and two- and four-hole flange panel plugs with post contacts. New types are being added to our product line, so please call with your requirements for other BMA configurations.

## PressMount Plug Receptacle



### Delta PressMount Receptacles

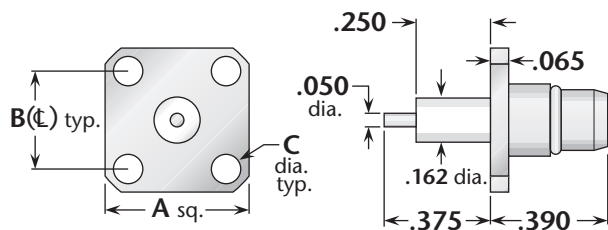
These connectors eliminate the need for complicated mounting hole patterns and mounting hardware. They are simply pressed into a single through hole, and the precisely-engineered knurled mounting section provides retention strength far greater than normal mating and unmating forces. An integral shoulder provides a positive stop when mounting.



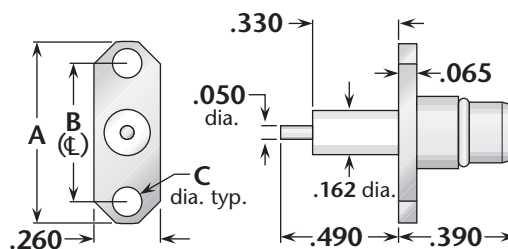
**Figure 1** (Brass body)

Figure	Dimensions		Min. Panel	Mounting Hole	Plating		Delta P/N
	A	B			Body	Contact	
1	.187	.050	.100	.250 ±.001 dia.	Nickel	Gold (C)	4259-000-N911-2

## Panel Plug Receptacles



**Figure 1** (Stainless steel body)



**Figure 2** (Stainless steel body)

Figure	Dimensions			Mounting Figure	Plating		Delta P/N
	A	B	C		Body	Contact	
1	.500	.340	.102	05	Passivated	Gold (C)	4259-000-K051
2	.625	.481	.102	92A	Passivated	Gold (C)	4259-000-K911-5

(C) in contact plating column indicates captive contact.  
See page 203 for mounting figures. • Contact factory for specifications and interface dimensions.