

General Description

Delta QMA jacks are connectors with size and performance similar to SMA connectors, but with a snap-on interface for quick mating and unmating, and brass body construction for economy. Designed to mate with all QMA plugs, they offer good electrical performance up to 6 GHz.

The PressMount mounting configuration (see below) allows QMA receptacles to be mounted securely in a single through hole, with center-to-center spacing as little as .325 inch. New types are being added to our product line, so please call with your requirements for other QMA configurations.

QMA Jack Specifications*

Electrical:

Nominal Impedance: 50 ohms.

Frequency Range: DC–6 GHz.

Voltage Rating: 335 volts RMS (dependent on cable).

Dielectric Withstanding Voltage: 1,000 volts RMS.

Insulation Resistance: 5,000 megohms.

VSWR: DC–3 GHz: 1.06:1 max; 3–6 GHz: 1.12:1 max.

Materials/Finishes:

Insulators: Teflon per ASTM D1710.

Female Contacts: Beryllium Copper per ASTM B196.

Contact Plating: Gold per MIL-G-45204.

Gaskets: Silicone rubber per ZZ-R-765, Class II, Grade 50.

Other Metal Parts: Brass per ASTM B16, gold plated per MIL-G-45204.

*These specifications are typical and may not apply to all connectors.

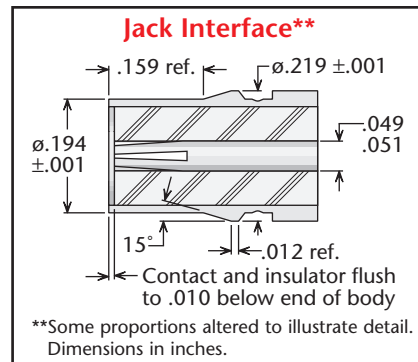
Detailed specifications for individual connectors are available on request.

Mechanical:

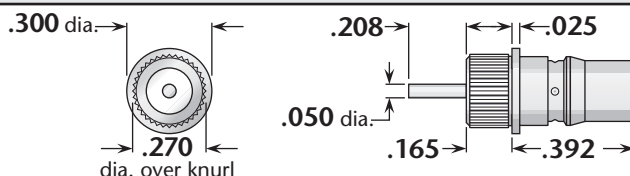
Durability: 100 mating cycles.

Force to Engage: 26 N.

Force to Disengage: 20 N.



QMA PressMount Receptacle—Post Contact



Minimum Panel Thickness	Mounting Hole Diameter	Plating		Delta P/N
		Body	Contact	
.100	.267 ±.001	Gold*	Gold (C)	4220-000-G911

Panel Jack Receptacles

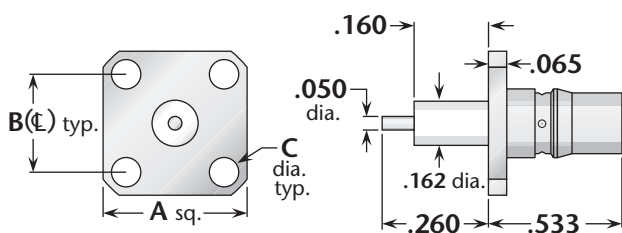


Figure 1 (Square flange)

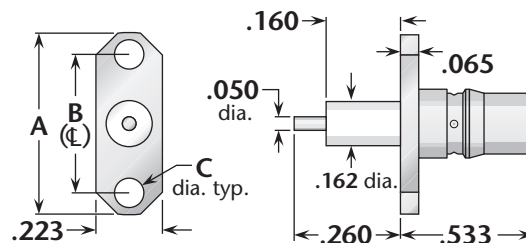


Figure 2 (Two-hole flange)

Figure	Dimensions			Mounting Figure	Plating		Delta P/N
	A	B	C		Body	Contact	
1	.500	.340	.102	05	Gold*	Gold (C)	4258-000-G051-9
2	.625	.481	.102	92	Gold*	Gold (C)	4258-000-G921-6

* Also available with Albaloy-plated body—change **G** in Delta part number to **Q**.
(C) in contact plating column indicates captive contact. • See page 203 for mounting dimensions.