

## Printed-Circuit Board Receptacles

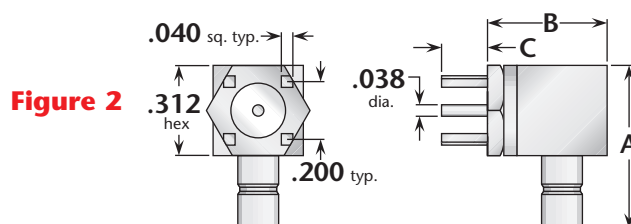
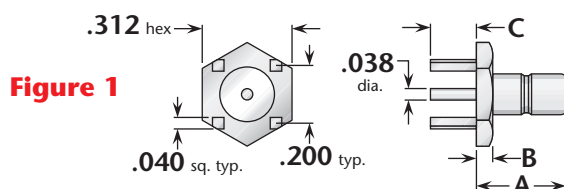
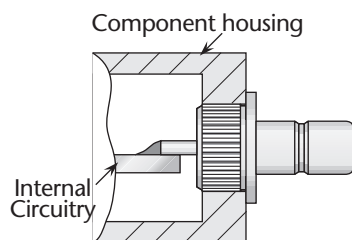


Figure	Dimensions			Max. Board	Mounting Figure	Plating		Delta P/N
	A	B	C			Body	Contact	
1	.300	.060	.155	.100	PCB06	Gold	Gold (C)	2468-000-G001
1	.300	.060	.155	.100	PCB06	Nickel	Gold (C)	2468-000-N001
2	.59	.375	.155	.100	PCB06	Gold	Gold (C)	2470-000-G00E
2	.59	.375	.155	.100	PCB06	Nickel	Gold (C)	2470-000-N00E

## PressMount Receptacles

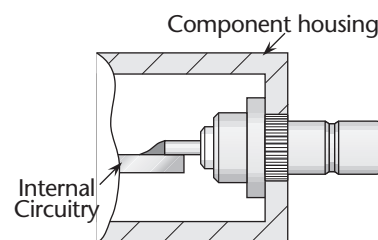
### Delta PressMount Receptacles



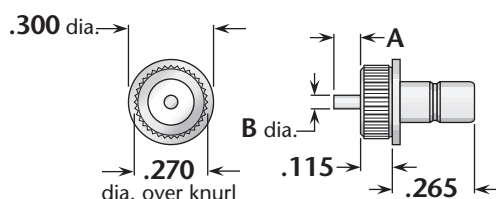
**Front mount**

These connectors eliminate the need for complicated mounting hole patterns and mounting hardware. They are simply pressed into a single through hole, and the precisely-engineered knurled mounting section provides retention strength far greater than normal mating and unmating forces. An integral shoulder provides a positive stop when mounting.

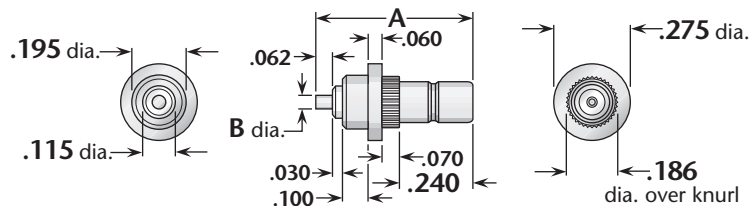
PressMounts are available for a wide variety of Delta connector series, and can be used in packages as small as the outer diameter of the connector body.



**Rear mount**



**Figure 1**  
(Post contact, front mount, stainless steel body)



**Figure 2**  
(Post contact, rear mount, brass body)

Figure	Dimensions		Min. Panel	Mounting Hole	Plating		Delta P/N
	A	B			Body	Contact	
1	.062	.050	.100	.267 ±.001 dia.	Passivated	Gold (C)	2420-000-K911-1
2	.500	.060	.062	.182 ±.001 dia.	Gold	Gold (C)	2421-000-G911

See page 203 for mounting dimensions. • (C) in contact plating column indicates captive contact.